



AO Trauma NA Case-based Dinner Discussion - El Paso - Distal Femur Fractures



December 7, 2022 - December 7, 2022
El Paso, Texas, USA



Brought to you by the AO Trauma North America Community Development Committee, this event is designed to be highly interactive with clinical case presentations on surgeries that are approaching and/or recent surgeries that were challenging or thought provoking. Faculty and participants will have the ability to share a 10-minute case presentation followed by 10 minutes of discussion. Faculty will also discuss recent advances, tips, tricks and techniques in fracture care as well as approaches for handling difficult fracture problems.

Event Summary

Tuition:

Level Name: Participant - Orthopaedic
Pricing Tier: Attending
Tuition: \$0.00

Course Prerequisite(s):

No Prerequisites

Venue:

Corralito Steakhouse Doniphan
5800 Doniphan Drive
El Paso, Texas, USA
Phone Number: 915-842-8880
<http://www.corralitosteakhouse.com/>

Language(s):

English

Directly Provided by:**Professional Level Prerequisite(s):**

No Prerequisites

CME

Continuing Education Credit: 1.50



- AO North America is accredited by the Accreditation Council for Continuing Medical Education to provide continuing medical education for physicians.

Below Wording CMF Only- Continuing Education Dental Credit Statement..

As an Accreditation Council for Continuing Medical Education (ACCME) accredited provider, AO North America meets the definition of a constituent or component organization of the AMA and thereby meets most state dental board requirements of an approved sponsor of continuing education. This course is focused on clinical issues in oral-maxillofacial surgery that are relevant to the treatment and care of dental patients. Most states accept AMA constituents as approved sponsors for continuing dental education credit. If you have questions, your state dental board can confirm eligibility of this course.

- **Designation Statement** - AO North America designates this live educational activity for a maximum of 1.50 **AMA PRA Category 1 Credits™**. Physicians should claim only the credit commensurate with the extent of their participation in the activity.

The Continuing Medical Education (CME) mission of AO North America (AONA®) is to provide comprehensive multidisciplinary needs based education to surgeons, fellows, and residents in the specialties of orthopedic, hand, craniomaxillofacial, spine, neurosurgery, and veterinary surgery in the areas of trauma (i.e., operative reduction and fixation), degenerative disorders, deformities, tumors, and reconstruction.

Expected results of AONA's CME activities for surgeons, fellows, and residents are to:

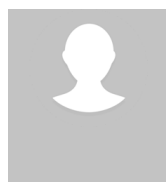
- Increase their knowledge base and surgical skill level
- Improve competence by applying advances of knowledge in patient care in the areas of trauma, degenerative disorders, deformities, tumors, and reconstructive surgical techniques
- Address practice performance gaps by improving management of aspects of traumatic injuries and musculoskeletal disorders (i.e., pre-operative planning to post-operative care)

Learning Objectives

Upon completion, participants should be able to:

- Create a timely course of action and a treatment plan
- Manage appropriate imaging needs and its interpretation
- Select the right surgical approach

Faculty



Adler, Adam - Chairperson

MD, FAAOS

Dr.

Director, Orthopaedic Trauma Service

Texas Tech Health Science Center

El Paso, Texas



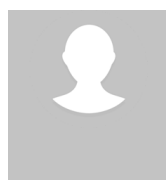
Polmear, Michael - Chairperson

MD, MS

William Beaumont Army Medical Center/Texas Tech University (El Paso)

EL PASO, Texas

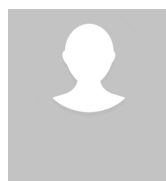
Dr. Michael Polmear is from Denver, CO and attended the University of Colorado at Boulder for chemical and biological engineering. He worked for in pharmaceutical manufacturing as a process engineering prior to completing a master's of science at Tufts University in Boston, MA. His thesis project investigated circulating tumor cells for diagnosis and therapeutic monitoring. He commissioned into the US Army and obtained his MD from the Uniformed Services University (USU) at Walter Reed National Military Medical Center. He is an orthopaedic surgery resident at William Beaumont Army Medical Center and Texas Tech University Health Sciences Center in El Paso, TX. He will be completing a fellowship in orthopaedic traumatology at University of Florida - Gainesville in 2023.



Purcell, Richard - Chairperson

MD

EL PASO, Texas



Thabet, Ahmed - Chairperson

MD

Dr

Texas Tech University HSC El Paso

El Paso, Texas



Yong, Taylor - Chairperson

MD, MS

Assistant Professor

Department of Orthopaedic Surgery & Rehabilitation

Texas Tech University Health Science Center, El Paso

El Paso, Texas

Dr. Taylor Yong is an Assistant Professor of Orthopaedic Surgery at Texas Tech University Health Science Center in El Paso, Texas. He completed residency training at Dartmouth-Hitchcock Medical Center which included a Master of Science in Healthcare Research from the Dartmouth Institute. After residency, he completed his orthopaedic trauma fellowship at Vanderbilt University Medical Center. Dr. Yong was also awarded the prestigious AO Trauma North America Jack McDaniel Memorial Fellowship, completing additional training at Universitätsspital Basel in Switzerland.



Large, Thomas - Education Advisor

MD

Associate Professor

Emory University

Department of Orthopaedic Surgery

Grady Memorial Hospital

Atlanta, Georgia

Originally from South Bend, IN, I graduated Summa Cum Laude from Duke University and Alpha Omega Alpha from Indiana University School of Medicine before completing my internship and orthopaedic surgery residency at Carolinas Medical Center in Charlotte, NC in 2006. I was then on active duty with the US Air Force including two tours at Bagram Airbase, Afghanistan, the largest and busiest trauma center in Operation Enduring Freedom. My military service culminated as Chief of Orthopaedic Surgery at Travis AFB, CA. After five months of volunteer work at Bedford Orthopaedic Hospital, Nelson Mandela University, Mthatha, S. Africa, I worked as a visiting surgeon with Professor Schildhauer in Bochum, Germany and then completed an AO fellowship with Professor Gebhard in Ulm, Germany. My trauma training concluded with fellowship at Harborview Medical Center in Seattle, WA. I am a practicing orthopaedic trauma surgeon previously at Mission Hospital in Asheville, NC from 2012-2021 and now at Grady Memorial Hospital, Emory University, in Atlanta, GA. I am committed to improving trauma care and education in the developing world and have done additional volunteer work in Ghana and Uganda. I enjoy hiking and other adventures with my family, travel, golf, photography, and old cars.

AO NA Disclaimer Information

Faculty Disclosure:

It is the policy of AO North America to abide by the Accreditation Council for Continuing Medical Education Standards for Commercial Support. Standard 2: "Disclosures Relevant to Potential Commercial Bias and Relevant Financial Relationships of Those with Control over CME Content," requires all planners, including course directors, chairs, and faculty, involved in the development of CME content to disclose their relevant financial relationships prior to participating in the activity. Relevant financial relationships will be disclosed to the activity audience. The intent of the disclosure is not to prevent a faculty with a relevant financial or other relationship from teaching, but to provide participants with information that might be of importance to their evaluation of content. All potential conflicts of interest have been resolved prior to the commencement of this activity.

Off-Label / Experimental Discussions:

Some medical devices used for teaching purposes and/or discussed in AO North America's educational activities may have been cleared by the FDA for specific uses only or may not yet be approved for any purpose. Faculty may discuss off-label, investigational, or experimental uses of products/devices in CME certified educational activities. Faculty have been advised that all recommendations involving clinical medicine in this CME activity are based on evidence that is accepted within the profession of medicine as adequate justification for their indications and contraindications in the care of patients.

All scientific research referred to, reported or used in this CME activity in support or justification of a patient care recommendation conforms to the generally accepted standards of experimental design, data collection and analysis.

Disclaimer:

AO NA does not endorse nor promote the use of any product/device of commercial entities. Equipment used in this course is for teaching purposes only with the intent to enhance the learning experience.

The opinions or views expressed in this live continuing medical education activity are those of the faculty and do not necessarily reflect the opinions or recommendations of AO North America or any commercial supporter. The certificate provided pertains only to the participants' completion of the course.

Conflict of Interest Resolution Statement:

When individuals in a position to control or influence the development of the content have reported financial relationships with one or more commercial interests, AO North America utilizes a process to identify and resolve potential conflicts to ensure that the content presented is free of commercial bias.

Liability Statement:

AO North America faculty and staff assume no personal liability for the techniques or the use of any equipment and accessories used for teaching purposes in the laboratory. The certificate provided pertains only to the participants' completion of the course and does not, in any way, attest to the proficiency of the participants' clinical experience.

Acknowledgment

Educational Grant

AO North America gratefully acknowledges funding for its education activities from the AO Foundation. The AO Foundation receives funding for education from Synthes GmbH.