



## AO CMF NA Pre-Course Symposium—Orbital Trauma and Reconstruction: Unsolvble Problems



September 17, 2021 - September 17, 2021

Minneapolis, Minnesota, USA

Challenging patient problems may occur after a traumatic craniofacial injury that may not be solvable. Surgeons must be able to adopt and implement best practices to facilitate optimal outcomes and patient satisfaction in these complex clinical scenarios. Managing patient expectations and effectively communicating the limitations of interventions and their impact on patient outcomes is critically important. Expert faculty will discuss case scenarios that focus on continuity of care as well as system and patient challenges and barriers.

### Target Audience

Practicing surgeons and residents at all levels of training in craniomaxillofacial surgery will benefit from attending.

## Event Summary

### Tuition:

Level Name: Participant - Craniomaxillofacial

Pricing Tier: Attending

Tuition: \$0.00

Level Name: Participant - Craniomaxillofacial

Pricing Tier: Resident

Tuition: \$0.00

### Course Prerequisite(s):

No Prerequisites

### Venue:

Hyatt Regency Minneapolis

1300 Nicollet Mall

Minneapolis, MN, USA

Phone Number: 612-370-1234

www.hyatt.com

### Language(s):

English

### Directly Provided by:



North America

### Professional Level Prerequisite(s):

No Prerequisites

## CME

**The Continuing Medical Education (CME) mission of AO North America (AONA®) is to provide comprehensive multidisciplinary needs based education to surgeons, fellows, and residents in the specialties of orthopedic, hand, craniomaxillofacial, spine, neurosurgery, and veterinary surgery in the areas of trauma (i.e., operative reduction and fixation), degenerative disorders, deformities, tumors, and reconstruction.**

**Expected results of AONA's CME activities for surgeons, fellows, and residents are to:**

- **Increase their knowledge base and surgical skill level**
- **Improve competence by applying advances of knowledge in patient care in the areas of trauma, degenerative disorders, deformities, tumors, and reconstructive surgical techniques**
- **Address practice performance gaps by improving management of aspects of traumatic injuries and musculoskeletal disorders (i.e., pre-operative planning to post-operative care)**

## Learning Objectives

**Upon completion, participants should be able to:**

## Faculty



### Schubert, Warren - Chairperson

MD, FACS  
Professor, University of Minnesota  
Department of Plastic & Hand Surgery  
Regions Hospital  
St. Paul, Minnesota

Family Practice Residency, University of Texas, San Antonio General Surgery Residency, McGill University, Montreal Plastic Surgery Residency, Case Western Reserve University, Cleveland Maxillofacial Trauma Fellowship, Atlanta Medical Center Past Chair, AOCMF International Board Past President, American Society of Maxillofacial Surgeons Professor, University of Minnesota Past Chair, Department of Plastic & Hand Surgery, Regions Hospital



### Barta, Jo - Lecturer

MD  
Adjunct Assistant Professor, University of Minnesota Medical School  
Chair, Craniofacial and Pediatric Plastic Surgery  
Department of Plastic & Hand Surgery, Regions Hospital  
St Paul, Minnesota



### Floyd, Michael - Lecturer

MD, MPH  
Department of Ophthalmology  
Health Partners  
St Paul, Minnesota

Dr. Floyd has been practicing pediatric ophthalmology and covering level 1 trauma since 2011. He completed medical school at George Washington University School of Medicine and Health Sciences, residency at University of Kansas Medical Center, and fellowship at the University of Iowa Hospitals and Clinics.



### Garland, Catharine - Lecturer

MD  
Assistant Professor  
Division of Plastic and Reconstructive Surgery  
Department of Surgery  
University of Wisconsin School of Medicine and Public Health  
Madison, Wisconsin

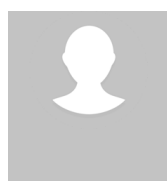
Dr. Garland is an assistant professor of plastic and reconstructive surgery, specializing in craniomaxillofacial surgery at the University of Wisconsin-Madison.



### Hamlar, David - Lecturer

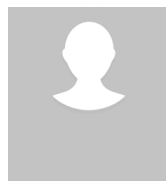
MD, DDS  
Assistant Professor  
Craniofacial Skull Base Center  
Department of Otolaryngology  
University of Minnesota  
Minneapolis, Minnesota

My passion is craniofacial reconstruction for children born with congenital deformities such as cleft lip and palate, cranial synostosis, and midface hypoplasia, hemifacial microsomia, Treacher-Collins, and other related jaw deformities. I enjoy microtia repair, microvascular reconstruction of head and neck defects, as well as the acute management of traumatic craniofacial injuries. I also manage head and tumors such as ameloblastomas, fibrous dysplasia, cystic hygromas, juvenile angiofibromas and their reconstruction. Techniques include image-guided minimally invasive skull base surgery, distraction osteogenesis, and resorbable hardware. I am retired military having deployed numerous times in both surgical and medical command positions. Nothing has meant more to me than caring for our injured men and women in the armed services.



### Kim, Charles - Lecturer

MD  
HealthPartners  
Saint Paul, Minnesota

**Lacey, Martin - Lecturer**

MD, FRCSC

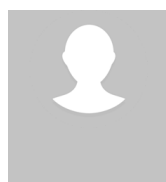
Dr

Chief Craniofacial Surgery  
Gillette Children's Specialty Healthcare  
St. Paul, Minnesota**Melicher, Jill - Lecturer**

MD

Ophthalmic Plastics, Orbit and Reconstructive Surgery  
Minnesota Eye Consultants  
Minnetonka, Minnesota

Dr. Jill Melicher is an ophthalmic plastic and reconstructive surgery specialist at Minnesota Eye Consultants. She specializes in surgery of the eyelids, the tear drainage system and the orbit. Dr. Melicher also provides an array of facial rejuvenation services, including cosmetic eyelid surgery, small incision endoscopic forehead lifts as well as fillers and botulinum toxin injections for wrinkle reduction. Dr. Melicher attended Concordia College in Moorhead, MN for undergraduate training and went on to medical school at the University of North Dakota School of Medicine and Health Sciences. She finished residency training at the University of Minnesota Medical School where she rotated with the Minnesota Eye Consultants physicians. Dr. Melicher completed her fellowship training under the direction of Dr. Jeffrey Nerad at the University of Iowa Hospitals and Clinics in Iowa City, IA and Cincinnati Eye Institute in Cincinnati, OH. Dr. Melicher is Board Certified in Ophthalmology and a member of the American Academy of Ophthalmology. She has completed fellowship training through the American Society of Ophthalmic Plastic and Reconstructive Surgery. She was inducted into the prestigious Alpha Omega Alpha Medical Honors Society and was awarded the Harry Plotke Award at the University of Minnesota Medical School, as well as numerous medical scholarships at the University of North Dakota School of Medicine and Health Sciences. She has authored numerous publications and textbook chapters. Dr. Melicher enjoys teaching and working with her eye care colleagues. Although originally from Fargo, North Dakota, Dr. Melicher and her husband call Minnesota home.

**Mokhtarzadeh, Ali - Lecturer**

MD

Assistant Professor  
Department of Ophthalmology and Visual Neurosciences  
Oculoplastic and Orbital Surgery  
University of Minnesota  
Minneapolis, Minnesota**Montag, David - Lecturer**

MD, MS

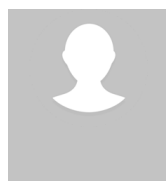
Assistant Professor  
Dept of Otolaryngology  
Hennepin Healthcare  
Minneapolis, Minnesota**Mount, Delora - Lecturer**

MD, FACS, FAAP

Professor of Plastic Surgery  
Craniofacial Surgery & Peds Plastics  
North Carolina Children's Hospital  
University of North Carolina - Chapel Hill  
Emeritus Professor of Plastic Surgery  
University of Wisconsin-Madison

Chapel Hill, North Carolina

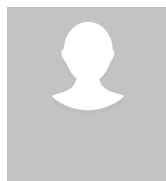
Dr. Delora Mount is dual board certified by the American Board of Plastic Surgery and the American Board of Surgery. Dr. Mount specializes in craniofacial surgery, orthognathic (jaw) surgery, maxillofacial trauma and benign maxillofacial tumor surgical treatments. Her clinical subspecialties include treatment of infants and children, particularly those with major facial birth defects which include, cleft lip/palate repair, correction of skull shape abnormalities, and speech disorders (hypernasal speech). She now serves as Chief of Pediatric Plastic Surgery at the Children's Hospital of New Orleans/LSU. She lists her favorite things as watching her son play football (he's really good) and hanging with her golden retrievers. She also loves teaching and mentoring the next generation of plastic surgeons, as well as collaborating with colleagues within the field by teaching courses with the AO and serving on the AO North America CMF Board.

**Patel, Ketan - Lecturer**

DDS, PhD

Dr

Fellowship Director  
North Memorial Health  
Head and Neck Oncology and Microvascular Reconstructive Surgery  
Robbinsdale, Minnesota



Pfaff, Tony - Lecturer

MD

Dr

Regions Hospital

St Paul

Staff ophthalmologist, Regions Hospital 16 years. Active with Emergency Medicine Residency Program education

---

## AO NA Disclaimer Information

### Faculty Disclosure:

It is the policy of AO North America to abide by the Accreditation Council for Continuing Medical Education Standards for Commercial Support. Standard 2: "Disclosures Relevant to Potential Commercial Bias and Relevant Financial Relationships of Those with Control over CME Content," requires all planners, including course directors, chairs, and faculty, involved in the development of CME content to disclose their relevant financial relationships prior to participating in the activity. Relevant financial relationships will be disclosed to the activity audience. The intent of the disclosure is not to prevent a faculty with a relevant financial or other relationship from teaching, but to provide participants with information that might be of importance to their evaluation of content. All potential conflicts of interest have been resolved prior to the commencement of this activity.

### Off-Label / Experimental Discussions:

Some medical devices used for teaching purposes and/or discussed in AO North America's educational activities may have been cleared by the FDA for specific uses only or may not yet be approved for any purpose. Faculty may discuss off-label, investigational, or experimental uses of products/devices in CME certified educational activities. Faculty have been advised that all recommendations involving clinical medicine in this CME activity are based on evidence that is accepted within the profession of medicine as adequate justification for their indications and contraindications in the care of patients.

All scientific research referred to, reported or used in this CME activity in support or justification of a patient care recommendation conforms to the generally accepted standards of experimental design, data collection and analysis.

### Disclaimer:

AONA does not endorse nor promote the use of any product/device of commercial entities. Equipment used in this course is for teaching purposes only with the intent to enhance the learning experience.

### USE THE BELOW TEXT FOR DIDACTIC COURSES ONLY!

The opinions or views expressed in this live continuing medical education activity are those of the faculty and do not necessarily reflect the opinions or recommendations of AO North America or any commercial supporter. The certificate provided pertains only to the participants' completion of the course.

### Conflict of Interest Resolution Statement:

When individuals in a position to control or influence the development of the content have reported financial relationships with one or more commercial interests, AO North America utilizes a process to identify and resolve potential conflicts to ensure that the content presented is free of commercial bias.

### Liability Statement:

AO North America faculty and staff assume no personal liability for the techniques or the use of any equipment and accessories used for teaching purposes in the laboratory. The certificate provided pertains only to the participants' completion of the course and does not, in any way, attest to the proficiency of the participants' clinical experience.

### Laboratory Waiver:

To participate in this surgical skills course, you will be required to sign a waiver of liability prior to the course. In order to participate, AONA's policy mandates that every individual must wear appropriate protective garments provided by AO NA during the lab sessions. Participants who do not sign the waiver and wear protective garments will not be allowed to participate in the laboratory sessions.

### Human Anatomic Specimens:

This course will involve exposure to and contact with human anatomic specimens. These specimens are being utilized for purposes of teaching and learning and are to be treated with the utmost respect. Participants should be familiar with and understand the potential risks involved and will be required to observe all customary safety procedures.

### Animal Anatomic Specimens:

This course will involve exposure to and contact with animal anatomic specimens. These specimens are being utilized for purposes of teaching and learning and are to be treated with the utmost respect. Participants should be familiar with and understand the potential risks involved and will be required to observe all customary safety procedures.

## Acknowledgment

### In-Kind Support

AO North America gratefully acknowledges in-kind support for equipment and technical staff from J&JMedTech.

### Educational Grant

AO North America gratefully acknowledges funding for its education activities from the AO Foundation. The AO Foundation receives funding for education from Synthes GmbH.