




## AO CMF NA Course—Management of Facial Trauma

 November 6, 2021 - November 7, 2021  
Orlando, Florida, USA

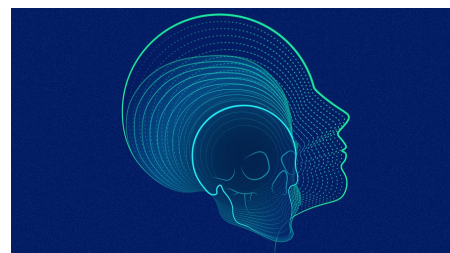
This course provides learners with the fundamental knowledge and principles for the treatment of craniomaxillofacial fractures and their complications. It covers diagnostic and treatment principles for midface and mandibular fractures, as well as the prevention and treatment of complications.

### 1. Online Preparations—4 weeks prior to the face-to-face event

During these 4 weeks, it is **recommended** for participants complete a self-assessment and conduct online self-study, including recommended reading material, viewing videos and completion of surgical simulation modules. Participants will receive a link to the learning materials from their event organizer.

### 2. Face-to-face event—2 days

The face-to-face event is delivered through a combination of short lectures, small group discussions, and practical exercises. This combination enables participants to hear, discuss, and apply the concepts of facial trauma management.



### Target Audience

This course is designed for surgeons in training in the fields of Oral and Maxillofacial Surgery, Otolaryngology, Plastics and Reconstruction, Ophthalmology and Oculoplastics. Some practicing surgeons may also find this course beneficial.

## Event Summary

#### Tuition:

Level Name: Participant - CMF  
Pricing Tier: Attending  
Tuition: \$215.00

Level Name: Participant - CMF  
Pricing Tier: Resident  
Tuition: \$215.00

#### Course Prerequisite(s):

No Prerequisites

#### Venue:

Caribe Royale Orlando  
8101 World Center Drive  
Orlando, Florida, USA  
Phone Number: 407-238-8000

#### Language(s):

English

#### Directly Provided by:



#### Professional Level Prerequisite(s):

No Prerequisites

## CME

### Continuing Education Credit: 13.25



- AO North America is accredited by the Accreditation Council for Continuing Medical Education to provide continuing medical education for physicians.
- AONA has been resurveyed by the Accreditation Council for Continuing Medical Education (ACCME) and awarded Accreditation with Commendation.

#### Continuing Education Dental Credit Statement

As an Accreditation Council for Continuing Medical Education (ACCME) accredited provider, AO North America meets the definition of a constituent or component organization of the AMA and thereby meets most state dental board requirements of an approved sponsor of continuing education. This course is focused on clinical issues in oral-maxillofacial surgery that are relevant to the treatment and care of dental patients. Most states accept AMA constituents as approved sponsors for continuing dental education credit. If you have questions, your state dental board can confirm eligibility of this course.

- **Designation Statement** - AO North America designates this live educational activity for a maximum of 13.25 **AMA PRA Category 1 Credits™**. Physicians should claim only the credit commensurate with the extent of their participation in the activity.

**The Continuing Medical Education (CME) mission of AO North America (AONA®) is to provide comprehensive multidisciplinary needs based education to surgeons, fellows, and residents in the specialties of orthopedic, hand, craniomaxillofacial, spine, neurosurgery, and veterinary surgery in the areas of trauma (i.e., operative reduction and fixation), degenerative disorders, deformities, tumors, and reconstruction.**

**Expected results of AONA's CME activities for surgeons, fellows, and residents are to:**

- **Increase their knowledge base and surgical skill level**
- **Improve competence by applying advances of knowledge in patient care in the areas of trauma, degenerative disorders, deformities, tumors, and reconstructive surgical techniques**
- **Address practice performance gaps by improving management of aspects of traumatic injuries and musculoskeletal disorders (i.e., pre-operative planning to post-operative care)**

## Learning Objectives

**Upon completion, participants should be able to:**

- Diagnose facial injury through history, physical examination, and diagnostic investigations
- Formulate a treatment plan (operative and non-operative)
- Perform the specific treatment for facial trauma
- Modify the treatment plan when necessary
- Manage patient follow-up and rehabilitation
- Identify and manage complications

## Agenda

### Day 1

**Saturday, November 06, 2021 - 08:00 - 17:05 - (includes breaks, travel-time and meals)**

Schedule	Title	Moderator	Faculty	Room
08:00 - 08:10	COURSE OPENING			
08:00 - 08:10	Welcome and Introduction		Cunningham, L	
08:10 - 11:50	MID & UPPER FACIAL TRAUMA	Salman, S		
08:10 - 08:20	Surgical Approaches to the Midface		Salman, S	
08:20 - 08:30	Reestablishing Pre-traumatic Occlusion		Aziz, S	
08:30 - 08:40	Maxillary Fractures		Mount, D	
08:40 - 08:50	Zygomatic Fractures		Henriquez, O	
08:50 - 09:00	Orbital Wall Fractures		Gandhi, P	
09:00 - 09:15	Coffee Break / Travel to Small Group Discussions			
09:15 - 11:15	SESSION A: SMALL GROUP DISCUSSION (Cases: Zygomatic, Orbit, Zygoma and Orbit, Le Fort Fractures); Summary, Q & A			
11:15 - 11:20	Travel to Lecture Hall			
11:20 - 11:30	Nasoorbitoethmoidal (NOE) Fractures		Deeb, R	
11:30 - 11:40	Frontal Sinus Fractures		Deeb, R	
11:40 - 11:50	Panfacial Fractures - Sequencing of Repair		Meara, D	
11:50 - 12:50	Lunch			
12:50 - 17:05	MID & UPPER FACIAL TRAUMA (continued)	Henriquez, O		
12:50 - 14:20	PRACTICAL EXERCISE 1: Complex Midface Fractures	Henriquez, O		
14:20 - 14:25	Travel to Lecture Hall			
14:25 - 14:35	Pediatric Facial Injuries		Patel, K	
14:35 - 14:55	Keynote Lecture - Computer Planning for Ballistic Injuries		Sawhney, R	
14:55 - 15:05	AOCMF - What is in it for you? (Membership Benefits, Offerings)		Cunningham, L	
15:05 - 15:20	Coffee Break/ Travel to Small Group Discussions			
15:20 - 17:05	SESSION B: SMALL GROUP DISCUSSION (Cases: NOE, Nasal, Frontal Sinus); Summary, Q & A			
17:05 - 17:05	Faculty Debrief			
17:05 - 18:00	Reception			

### Day 2

**Sunday, November 07, 2021 - 07:30 - 14:00 - (includes breaks, travel-time and meals)**

Schedule	Title	Moderator	Faculty	Room
07:30 - 14:00	MANDIBULAR TRAUMA	Salman, S		
07:30 - 07:40	Surgical Approaches to the Mandible		Lee, J	
07:40 - 07:50	Mandibular Fractures: Load Sharing and Load Bearing		Nam, A	
07:50 - 08:00	Condylar Fractures		Aziz, S	
08:00 - 08:05	Travel to Lab			
08:05 - 09:35	PRACTICAL EXERCISE 2: Load Sharing Mandibular Fractures	Sawhney, R		
09:35 - 09:50	Coffee Break / Travel to Small Groups			

09:50 - 11:10	SESSION C: SMALL GROUP DISCUSSION (Cases: Load Sharing, Tooth in the Line of Fracture, Sequencing, Condyle)	
11:10 - 11:15	Travel to Lab	
11:15 - 12:15	PRACTICAL EXERCISE 3: Fractures of the Complicated Mandible	Sawhney, R
12:15 - 12:25	Pick-up Boxed Lunches / Travel to Small Group Discussions	
12:25 - 14:00	SESSION D: SMALL GROUP DISCUSSION (Cases: Load Bearing): Summary, Q & A	

## AO NA Disclaimer Information

### **Faculty Disclosure:**

It is the policy of AO North America to abide by the Accreditation Council for Continuing Medical Education Standards for Commercial Support. Standard 2: "Disclosures Relevant to Potential Commercial Bias and Relevant Financial Relationships of Those with Control over CME Content," requires all planners, including course directors, chairs, and faculty, involved in the development of CME content to disclose their relevant financial relationships prior to participating in the activity. Relevant financial relationships will be disclosed to the activity audience. The intent of the disclosure is not to prevent a faculty with a relevant financial or other relationship from teaching, but to provide participants with information that might be of importance to their evaluation of content. All potential conflicts of interest have been resolved prior to the commencement of this activity.

### **Off-Label / Experimental Discussions:**

Some medical devices used for teaching purposes and/or discussed in AO North America's educational activities may have been cleared by the FDA for specific uses only or may not yet be approved for any purpose. Faculty may discuss off-label, investigational, or experimental uses of products/devices in CME certified educational activities. Faculty have been advised that all recommendations involving clinical medicine in this CME activity are based on evidence that is accepted within the profession of medicine as adequate justification for their indications and contraindications in the care of patients.

All scientific research referred to, reported or used in this CME activity in support or justification of a patient care recommendation conforms to the generally accepted standards of experimental design, data collection and analysis.

### **Disclaimer:**

AONA does not endorse nor promote the use of any product/device of commercial entities. Equipment used in this course is for teaching purposes only with the intent to enhance the learning experience.

### **Conflict of Interest Resolution Statement:**

When individuals in a position to control or influence the development of the content have reported financial relationships with one or more commercial interests, AO North America utilizes a process to identify and resolve potential conflicts to ensure that the content presented is free of commercial bias.

### **Liability Statement:**

AO North America faculty and staff assume no personal liability for the techniques or the use of any equipment and accessories used for teaching purposes in the laboratory. The certificate provided pertains only to the participants' completion of the course and does not, in any way, attest to the proficiency of the participants' clinical experience.

## Acknowledgment

### **In-Kind Support**

AO North America gratefully acknowledges in-kind support for equipment and technical staff from J&JMedTech.

### **Educational Grant**

AO North America gratefully acknowledges funding for its education activities from the AO Foundation. The AO Foundation receives funding for education from Synthes GmbH.