




AO Trauma NA IL Pelvic & Acetabular Fracture Management Essentials: Pelvis Definitive Management Week 2

 July 18, 2020 - July 18, 2020
Wayne, Pennsylvania, USA

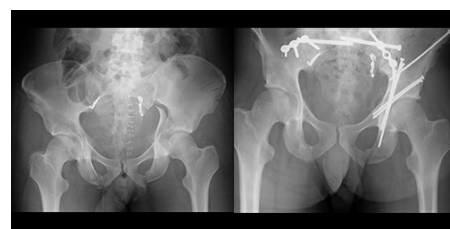
Pelvic and acetabular fractures are relatively uncommon injuries and they are often complex and associated with life threatening trauma. Morbidity, and mortality rates that have been reported ranging from 3% to 20%. The initial management of a patient with an unstable pelvic fracture can be lifesaving and can significantly decrease ultimate morbidity but the management of pelvic and acetabular fractures is inherently difficult. The incidence of complications may be quite high, and surgeons are often unfamiliar with the regional anatomy of the pelvis and the specialized reduction techniques and maneuvers and implants necessary to treat these injuries.

Orthopedic surgeons are often faced with the initial management of these patients while taking emergency room call but are often unprepared to provide this management.

This course will:

- Address the radiographic understanding of complex pelvic and acetabular fracture patterns
- Improve your understanding and ability to classify fractures of the pelvis
- Allow you time to practice surgical approach, reduction and fixation techniques using human cadaveric specimens
- Enhance your competency skills in managing pelvic and acetabular fractures

In order to be eligible to participate in a pelvic and acetabular cadaver lab at a future date, participants must attend all live sessions.



Event Summary

Tuition:

Level Name: Participant - Orthopaedic

Pricing Tier: Attending

Tuition: \$0.00

Course Prerequisite(s):

No Prerequisites

Venue:

No Venue

Language(s):

English

Directly Provided by:



Professional Level Prerequisite(s):

No Prerequisites

CME

Continuing Education Credit: 1.50



- AO North America is accredited by the Accreditation Council for Continuing Medical Education to provide continuing medical education for physicians.
- AONA has been resurveyed by the Accreditation Council for Continuing Medical Education (ACCME) and awarded Accreditation with Commendation.

- **Designation Statement** - AO North America designates this live educational activity for a maximum of 1.50 **AMA PRA Category 1 Credits™**. Physicians should claim only the credit commensurate with the extent of their participation in the activity.

The Continuing Medical Education (CME) mission of AO North America (AONA®) is to provide comprehensive multidisciplinary needs based education to surgeons, fellows, and residents in the specialties of orthopedic, hand, craniomaxillofacial, spine, neurosurgery, and veterinary surgery in the areas of trauma (i.e.), operative reduction and fixation), degenerative disorders, deformities, tumors, and reconstruction.

Expected results of AONA's CME activities for surgeons, fellows, and residents are to:

- Increase their knowledge base and surgical skill level
- Improve competence by applying advances of knowledge in patient care in the areas of trauma, degenerative disorders, deformities, tumors, and reconstructive surgical techniques
- Address practice performance gaps by improving management of aspects of traumatic injuries and musculoskeletal disorders (i.e., pre-operative planning to post-operative care)

Learning Objectives

Upon completion, participants should be able to:

- Apply appropriate decision-making strategies for the management of patients with pelvic fractures.
- List the indications for operative management.
- Explain when to use which type of fixation and the order of fixation.
- Determine the appropriate surgical approach and treatment options for pelvic fractures

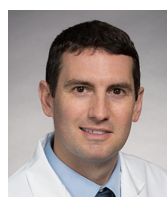
Faculty



Crist, Brett - Lecturer

MD
Professor
Vice Chairman of Business Development
Director Orthopaedic Trauma Fellowship
Director of Limb Preservation and Optimization Center
Department of Orthopaedic Surgery
Columbia, Missouri

After obtaining a bachelor's degree from Tabor College in Hillsboro, Kansas, Dr. Crist earned his medical degree from the University of Kansas School of Medicine. He completed his residency at the University of Kansas School of Medicine, Wichita, and a fellowship in orthopaedic trauma at the University of California-Davis. Dr. Crist is the Director of the Orthopaedic Trauma Fellowship, and the Vice Chairman for Business Development. He specializes in orthopaedic trauma/fracture care, limb deformity/nonunion/malunion, hip and pelvis reconstruction including total hip arthroplasty, and young adult hip disorders/hip preservation. Dr. Crist is a Tenured Professor of Orthopaedic Surgery at the University of Missouri School of Medicine. He has research interests in fracture care, nonunions, deformity, infections, anterior total hip arthroplasty, patient-centered outcomes and hip preservation procedures. From the beginning of his career, he's been involved with AO and continues to enjoy teaching at AO events, participating in committee and leadership roles, and being a part of the AO Family.



Kleweno, Conor - Lecturer

MD
Associate Professor
Orthopaedics and Sports Medicine
University of Washington
Harborview Medical Center
Seattle, Washington

Dr. Kleweno is an Associate Professor with the University of Washington Orthopaedics and Sports Medicine Department at Harborview Medical Center. He is devoted to improving the quality of patient care in orthopedic trauma surgery. Dr. Kleweno earned his medical degree from Harvard Medical School in Boston, Massachusetts. Afterward he completed the Harvard Combined Orthopaedic Surgery Residency and a fellowship in traumatology at the Shock Trauma Center in Baltimore, Maryland. His clinical interests include the care of orthopedic trauma, pelvic and acetabular fractures, and a focus on joint reconstruction and fracture malunion and nonunion treatment. His research interests include pelvis and acetabular fractures. Dr. Kleweno tries to ensure patients understand their injuries, individualized evidence-based treatment plan and expected health outcome. Dr. Kleweno strives to establish partnerships that empower patients to play an active role in their recovery.



Learned, James - Lecturer

MD
Associate Clinical Professor
Department of Orthopaedic Surgery
UCI Health
Orange, California

Dr. Learned treats acute fractures and chronic deformities, infections and nonunions. He enjoys complex fracture reconstruction, including pelvic and acetabular fractures. In his spare time, he enjoys spending time with his family and dogs, live music and outdoor activities.



Reilly, Mark - Lecturer

MD
Chief, Orthopaedic Trauma Service
Professor, Department of Orthopaedics
Rutgers - New Jersey Medical School
Newark, New Jersey

Dr. Reilly received his medical degree from the Chicago Medical School and completed his Orthopaedic Surgery training at Harbor-UCLA Medical Center. He subsequently completed fellowship training in Orthopaedic trauma with a special emphasis on the treatment of pelvic and acetabular fractures and special reconstructive problems of the hip and pelvis under the tutelage of Dr. Joel Matta at the Hospital of the Good Samaritan and Los Angeles County-USC Medical Center. He is currently Professor of Orthopaedics at Rutgers-New Jersey Medical School and Chief of the Orthopaedic Trauma Service and Director of the Orthopaedic Trauma Fellowship at the University Hospital in Newark, New Jersey. Dr. Reilly is the past Chair of the AO Trauma Education Commission, past Chair of AOTrauma North America and the current Chair elect of the AOTrauma International Board. He has previously served as Chair of the North American Musculoskeletal Trauma Education Committee. He has also served on multiple committees for the American Academy of Orthopaedic Surgeons and the Orthopaedic Trauma Association. He has a special interest within the AO on Faculty Development and has been involved in the Chair and Faculty Education as well as the Leadership Education Program. He has also served on the Periprosthetic Fracture Curriculum Task Force: a collaborative group representing both AO Trauma and AO Recon. Dr. Reilly has extensively published in Orthopaedic Trauma literature and has taught at over 500 educational events world-wide.



Sims, Stephen - Lecturer

MD
Professor Orthopaedic Trauma
Department of Orthopaedic Surgery
Carolinas Medical Center
Charlotte, North Carolina

**Stephen, David - Lecturer**

MD, FRCS(C)
Sunnybrook Health Sciences Centre
Associate Professor
University of Toronto
Toronto, Ontario

**Wright, Raymond - Lecturer**

MD
Professor
Orthopaedic Trauma Fellowship Director
Associate Residency Program Director
Department of Orthopaedic Surgery
University of Kentucky Chandler Medical Center
Lexington, Kentucky

Agenda

Day 1

Saturday, July 18, 2020 - 10:00 - 11:30

Schedule	Title	Moderator	Faculty	Room
10:00 - 11:05	Pelvis Definitive Management	Reilly, M Sims, S Stephen, D		
10:00 - 10:20	Indications for Surgery: When to use anterior fixation, posterior fixation or both and order of fixation		Crist, B	
10:20 - 10:35	Definitive Management of the Anterior Pelvic Ring: Discuss surgical approaches and treatment options to include plating, rami screws, external fixation and infix		Learned, J	
10:35 - 10:50	SI Joint Dislocations and Fracture Dislocations: Discuss surgical approaches and treatment options to include anterior, posterior and percutaneous		Kleweno, C	
10:50 - 11:05	Sacral Fractures: Discuss approaches and treatment options to include Percutaneous, Open Reduction, Iliosacral Screws, Tension Band Plate and Lumbopelvic Fixation		Wright, R	
11:05 - 11:30	Q & A / Wrap-up / Cases with Panel	Reilly, M Sims, S Stephen, D		

AO NA Disclaimer Information

Faculty Disclosure:

It is the policy of AO North America to abide by the Accreditation Council for Continuing Medical Education Standards for Commercial Support. Standard 2: "Disclosures Relevant to Potential Commercial Bias and Relevant Financial Relationships of Those with Control over CME Content," requires all planners, including course directors, chairs, and faculty, involved in the development of CME content to disclose their relevant financial relationships prior to participating in the activity. Relevant financial relationships will be disclosed to the activity audience. The intent of the disclosure is not to prevent a faculty with a relevant financial or other relationship from teaching, but to provide participants with information that might be of importance to their evaluation of content. All potential conflicts of interest have been resolved prior to the commencement of this activity.

Off-Label / Experimental Discussions:

Some medical devices used for teaching purposes and/or discussed in AO North America's educational activities may have been cleared by the FDA for specific uses only or may not yet be approved for any purpose. Faculty may discuss off-label, investigational, or experimental uses of products/devices in CME certified educational activities. Faculty have been advised that all recommendations involving clinical medicine in this CME activity are based on evidence that is accepted within the profession of medicine as adequate justification for their indications and contraindications in the care of patients.

All scientific research referred to, reported or used in this CME activity in support or justification of a patient care recommendation conforms to the generally accepted standards of experimental design, data collection and analysis.

Disclaimer:

AONA does not endorse nor promote the use of any product/device of commercial entities. Equipment used or discussed in this educational activity is for teaching purposes only with the intent to enhance the learning experience.

The opinions or views expressed in this live continuing medical education activity are those of the faculty and do not necessarily reflect the opinions or recommendations of AO North America or any commercial supporter. The certificate provided pertains only to the participants' completion of the educational activity.

Conflict of Interest Resolution Statement:

When individuals in a position to control or influence the development of the content have reported financial relationships with one or more commercial interests, AO North America utilizes a process to identify and resolve potential conflicts to ensure that the content presented is free of commercial bias.

Liability Statement:

AO North America faculty and staff assume no personal liability for the techniques/ approaches discussed or demonstrated which are for teaching and educational purposes only. The certificate provided pertains only to the participants' completion of the course and does not, in any way, attest to the proficiency of the participants' clinical experience.

Acknowledgment

Educational Grant

AO North America gratefully acknowledges funding for its education activities from the AO Foundation. The AO Foundation receives funding for education from Synthes GmbH.