


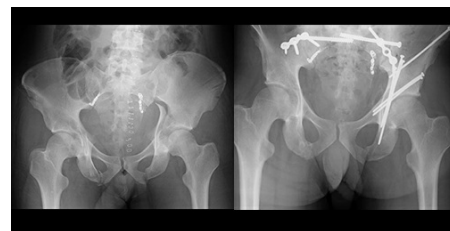


AO Trauma NA Internet Live Pelvic & Acetabular Fracture Management Essentials: Pelvis Definitive Management Week 1

 July 11, 2020 - July 11, 2020
Wayne, Pennsylvania, USA

Pelvic and acetabular fractures are relatively uncommon injuries and they are often complex and associated with life threatening trauma. Morbidity, and mortality rates that have been reported ranging from 3% to 20%. The initial management of a patient with an unstable pelvic fracture can be lifesaving and can significantly decrease ultimate morbidity but the management of pelvic and acetabular fractures is inherently difficult. The incidence of complications may be quite high, and surgeons are often unfamiliar with the regional anatomy of the pelvis and the specialized reduction techniques and maneuvers and implants necessary to treat these injuries.

Orthopedic surgeons are often faced with the initial management of these patients while taking emergency room call but are often unprepared to provide this management.



This course will:

- Address the radiographic understanding of complex pelvic and acetabular fracture patterns
- Improve your understanding and ability to classify fractures of the pelvis
- Allow you time to practice surgical approach, reduction and fixation techniques using human cadaveric specimens
- Enhance your competency skills in managing pelvic and acetabular fractures

In order to be eligible to participate in a pelvic and acetabular cadaver lab at a future date, participants must attend all live sessions.

Event Summary

Tuition:
Level Name: Participant - Orthopaedic
Pricing Tier: Attending
Tuition: \$0.00

Course Prerequisite(s):
No Prerequisites

Venue:
No Venue

Language(s):
English

Directly Provided by:



Professional Level Prerequisite(s):
No Prerequisites

CME

Continuing Education Credit: 1.50



- AO North America is accredited by the Accreditation Council for Continuing Medical Education to provide continuing medical education for physicians.
- AONA has been resurveyed by the Accreditation Council for Continuing Medical Education (ACCME) and awarded Accreditation with Commendation.

- **Designation Statement** - AO North America designates this live educational activity for a maximum of 1.50 **AMA PRA Category 1 Credits™**. Physicians should claim only the credit commensurate with the extent of their participation in the activity.

The Continuing Medical Education (CME) mission of AO North America (AONA®) is to provide comprehensive multidisciplinary needs based education to surgeons, fellows, and residents in the specialties of orthopedic, hand, craniomaxillofacial, spine, neurosurgery, and veterinary surgery in the areas of trauma (i.e.), operative reduction and fixation), degenerative disorders, deformities, tumors, and reconstruction.

Expected results of AONA's CME activities for surgeons, fellows, and residents are to:

- Increase their knowledge base and surgical skill level
- Improve competence by applying advances of knowledge in patient care in the areas of trauma, degenerative disorders, deformities, tumors, and reconstructive surgical techniques
- Address practice performance gaps by improving management of aspects of traumatic injuries and musculoskeletal disorders (i.e., pre-operative planning to post-operative care)

Learning Objectives

Upon completion, participants should be able to:

- Define the key elements in the initial evaluation and management of patients with pelvic and acetabular fractures
- Demonstrate an understanding of the radiology of pelvic fractures and displacement.
- Classify pelvic fractures based upon an understanding of the radiographic appearance of the normal and injured pelvis. Describe how the classification relates to treatment.
- Identify the indications for and describe techniques of the percutaneous treatment of pelvic fractures.

Faculty



Reilly, Mark - Co-Chairperson

MD
Chief, Orthopaedic Trauma Service
Professor, Department of Orthopaedics
Rutgers - New Jersey Medical School
Newark, New Jersey

Dr. Reilly received his medical degree from the Chicago Medical School and completed his Orthopaedic Surgery training at Harbor-UCLA Medical Center. He subsequently completed fellowship training in Orthopaedic trauma with a special emphasis on the treatment of pelvic and acetabular fractures and special reconstructive problems of the hip and pelvis under the tutelage of Dr. Joel Matta at the Hospital of the Good Samaritan and Los Angeles County-USC Medical Center. He is currently Professor of Orthopaedics at Rutgers-New Jersey Medical School and Chief of the Orthopaedic Trauma Service and Director of the Orthopaedic Trauma Fellowship at the University Hospital in Newark, New Jersey. Dr. Reilly is the past Chair of the AO Trauma Education Commission, past Chair of AOTrauma North America and the current Chair elect of the AOTrauma International Board. He has previously served as Chair of the North American Musculoskeletal Trauma Education Committee. He has also served on multiple committees for the American Academy of Orthopaedic Surgeons and the Orthopaedic Trauma Association. He has a special interest within the AO on Faculty Development and has been involved in the Chair and Faculty Education as well as the Leadership Education Program. He has also served on the Periprosthetic Fracture Curriculum Task Force: a collaborative group representing both AO Trauma and AO Recon. Dr. Reilly has extensively published in Orthopaedic Trauma literature and has taught at over 500 educational events world-wide.



Sims, Stephen - Co-Chairperson

MD
Professor Orthopaedic Trauma
Department of Orthopaedic Surgery
Carolinas Medical Center
Charlotte, North Carolina



Stephen, David - Co-Chairperson

MD, FRCS(C)
Sunnybrook Health Sciences Centre
Associate Professor
University of Toronto
Toronto, Ontario



Adams, Mark - Lecturer

MD
Associate Professor
Fellowship Program Director
Division of Orthopaedic Trauma
Rutgers New Jersey Medical School
Newark, New Jersey

Mark R. Adams, MD, is a board certified orthopaedic surgeon at Rutgers North Jersey Orthopaedic Institute (NJOI), and an associate professor in the Department of Orthopaedics at Rutgers New Jersey Medical School (NJMS). He is also an attending orthopaedic trauma surgeon for the Department of Orthopaedics in the Division of Trauma at University Hospital in Newark, the Level I Trauma Center for northern New Jersey. He specializes in complex fractures of the upper and lower extremities, complications and post-traumatic reconstruction, and serves as the program director for the Orthopaedic Trauma Fellowship at Rutgers New Jersey Medical School.



Kreder, Hans - Lecturer

MD, MPH, FRCS(C)
Professor, Orthopaedic Surgery & HPME, University of Toronto
Trauma and Adult Reconstructive Surgery
Sunnybrook Health Sciences Centre
Toronto, Ontario

Dr. Kreder, Professor, University of Toronto, in Orthopaedic Surgery and Health Policy Evaluation and Management has a subspecialty practice in Orthopaedic trauma surgery at Sunnybrook, with a focus on pelvic and acetabular trauma and adult hip and knee joint replacement. Dr. Kreder's main research interests involve the measurement of function and other outcomes following traumatic musculoskeletal injuries, arthritic conditions and metastatic disease, as well as policy issues regarding access to care and the effect of provider experience and volume on patient outcome. He is the inaugural recipient of the AAOS /OREF Health Services Fellowship, the first recipient of the Orthopaedic Clinical Epidemiology Chair and the inaugural recipient of the Marvin Tile Chair in Orthopaedic Surgery at Sunnybrook Health Sciences Centre, University of Toronto, and the past Chief of the Musculoskeletal Program and the past Head of the Division of Orthopaedic Surgery. He is a past AO trustee.

**Routt, Milton - Lecturer****MD****Professor****Dr. Andrew R. Burgess Endowed Chair in Orthopaedic Trauma Surgery****McGovern Medical School at The University of Texas Health Science Center at Houston (UTHealth)****Department of Orthopaedic Surgery****Memorial Hermann - Texas Medical Center****Houston, Texas**

Milton Lee (Chip) Routt, Jr., M.D. is the Dr. Andrew R. Burgess Endowed Chair and Professor of Orthopaedic Surgery at The University of Texas McGovern Medical School at Houston, The Texas Trauma Institute, and Memorial Hermann Hospital – Texas Medical Center. He currently serves as the President of the Surgeon's Council and Chairman of the Quality Assurance Committee, and on the Medical Executive Committee at Memorial Hermann Hospital – Texas Medical Center. Dr. Routt is a native of Chappell Hill, Texas, graduating Summa Cum Laude from Texas A&M University. Following medical school at the University of Texas Medical Branch in Galveston, he completed a Surgical Internship and Orthopaedic Residency at Vanderbilt University. His Orthopaedic Traumatology fellowship was at the University of Washington's Harborview Medical Center. He remained there as faculty from 1989 through 2012. Dr. Routt has published numerous peer-reviewed articles and other educational contributions including book chapters. He is best known as a tireless and devoted physician-surgeon, and passionate teacher. Dr. Routt has received a variety of awards including the 2024 AONA Educator of the Year, 2019 Leonard Tow Award for Humanism and Education, the 2019 James Red Duke Physician Leadership Award, 2018 MHH Physician of the Year, Orthopedic Resident Teaching awards at UT Houston and the University of Washington, and the Jack McDaniels Traveling Fellowship. Dr. Routt is an Ashbel Smith Distinguished Alumnus of UTMB and a Distinguished Alumnus of Brenham High School. He has directly mentored, educated, and hosted hundreds of Orthopaedic Traumatologists from the United States and Canada, and from across the globe. He is recognized nationally and internationally for his work with pelvic and acetabular injuries. Dr. Routt is an AO North America past President. He is a member of the Orthopedic Trauma Association, the AO Alumni Association and the Alpha Omega Alpha Honor Medical Society, among others. Dr. Routt is board certified by the American Board of Orthopedic Surgeons.

Agenda

Day 1

Saturday, July 11, 2020 - 10:00 - 11:30

Schedule	Title	Moderator	Faculty	Room
10:00 - 10:10	Introduction		Reilly, M Sims, S Stephen, D	
10:10 - 10:40	Pelvis Evaluation and Emergent Management	Sims, S		
10:10 - 10:25	Pelvis: Radiographic Evaluation and Classification		Adams, M	
10:25 - 10:40	Acute Management and Hemorrhage Control: The Role of the Orthopedic Trauma Surgeon		Kreder, H	
10:40 - 11:30	Pelvis Definitive Management	Sims, S		
10:40 - 11:15	Percutaneous Techniques: To include indications and contra-indications, Pre-op planning, assessing boney corridors on x-rays and CT scans, Sacral dysmorphism, and intra-op techniques (C-arm views and screw placement)		Roult, M	
11:15 - 11:30	Q & A / Wrap-up		Reilly, M Sims, S Stephen, D	

AO NA Disclaimer Information

Faculty Disclosure:

It is the policy of AO North America to abide by the Accreditation Council for Continuing Medical Education Standards for Commercial Support. Standard 2: "Disclosures Relevant to Potential Commercial Bias and Relevant Financial Relationships of Those with Control over CME Content," requires all planners, including course directors, chairs, and faculty, involved in the development of CME content to disclose their relevant financial relationships prior to participating in the activity. Relevant financial relationships will be disclosed to the activity audience. The intent of the disclosure is not to prevent a faculty with a relevant financial or other relationship from teaching, but to provide participants with information that might be of importance to their evaluation of content. All potential conflicts of interest have been resolved prior to the commencement of this activity.

Off-Label / Experimental Discussions:

Some medical devices used for teaching purposes and/or discussed in AO North America's educational activities may have been cleared by the FDA for specific uses only or may not yet be approved for any purpose. Faculty may discuss off-label, investigational, or experimental uses of products/devices in CME certified educational activities. Faculty have been advised that all recommendations involving clinical medicine in this CME activity are based on evidence that is accepted within the profession of medicine as adequate justification for their indications and contraindications in the care of patients.

All scientific research referred to, reported or used in this CME activity in support or justification of a patient care recommendation conforms to the generally accepted standards of experimental design, data collection and analysis.

Disclaimer:

AONA does not endorse nor promote the use of any product/device of commercial entities. Equipment used or discussed in this educational activity is for teaching purposes only with the intent to enhance the learning experience.

The opinions or views expressed in this live continuing medical education activity are those of the faculty and do not necessarily reflect the opinions or recommendations of AO North America or any commercial supporter. The certificate provided pertains only to the participants' completion of the educational activity.

Conflict of Interest Resolution Statement:

When individuals in a position to control or influence the development of the content have reported financial relationships with one or more commercial interests, AO North America utilizes a process to identify and resolve potential conflicts to ensure that the content presented is free of commercial bias.

Liability Statement:

AO North America faculty and staff assume no personal liability for the techniques/ approaches discussed or demonstrated which are for teaching and educational purposes only. The certificate provided pertains only to the participants' completion of the course and does not, in any way, attest to the proficiency of the participants' clinical experience.

Acknowledgment

Educational Grant

AO North America gratefully acknowledges funding for its education activities from the AO Foundation. The AO Foundation receives funding for education from Synthes GmbH.