



## Fragility Fractures and Orthogeriatrics



September 15, 2016 - September 17, 2016  
Orlando, Florida, USA

All physicians and extended care providers who treat older adults should have the necessary knowledge and skills to provide high quality care. This course will address several areas where many practitioners fall short. Metabolic bone issues in the elderly, medical co-management of the elderly and special techniques to deal with osteoporotic bone. It is important to establish a system of care for better osteoporosis management and outcomes for fragility fractures in the geriatric population.

In this highly interactive course, the participant will become familiar with the latest techniques and concepts of co-managed care in treating fragility fractures and orthogeriatrics. Sessions are focused on surgical treatment of frequently encountered osteoporotic fractures; and the benefits of medical co-management will be explained. Fundamental issues encountered when treating the elderly are discussed throughout the course.

The international faculty consists of orthopedic surgeons, geriatric medicine physicians, anesthesiologists and extended care providers who are very experienced in the treatment of the elderly. This Course will enhance your ability to treat the fastest growing portion of our population. There will be specialized sessions for geriatricians and hospitalists as well as combined sessions with the orthopedic surgeons, anesthesiologists and extended care providers to enhance and meet the needs of all disciplines.

### Target Audience:

The target audience for this activity includes orthopedic surgeons, anesthesiologists, geriatricians, hospitalists, internists, generalists, and extended care providers who have an interest in orthogeriatrics and fragility fractures.

## Event Summary

### Tuition:

Level Name: Participant - Orthopaedic  
Pricing Tier: Attending  
Tuition: \$700.00

Level Name: Participant - Orthopaedic  
Pricing Tier: Audit  
Tuition: \$400.00

Level Name: Participant - Geriatric/Hospitalist  
Pricing Tier: Attending  
Tuition: \$700.00

Level Name: Participant - Geriatric/Hospitalist  
Pricing Tier: Audit  
Tuition: \$400.00

### Course Prerequisite(s):

No Prerequisites

### Venue:

Rosen Shingle Creek  
9939 Universal Blvd.  
Orlando, FL, USA  
Phone Number: 407-996-9939

### Language(s):

English

### Directly Provided by:



### Professional Level Prerequisite(s):

No Prerequisites

## CME

### Continuing Education Credit: 21.00



- AO North America is accredited by the Accreditation Council for Continuing Medical Education to provide continuing medical education for physicians.

Below Wording CMF Only- Continuing Education Dental Credit Statement..

As an Accreditation Council for Continuing Medical Education (ACCME) accredited provider, AO North America meets the definition of a constituent or component organization of the AMA and thereby meets most state dental board requirements of an approved sponsor of continuing education. This course is focused on clinical issues in oral-maxillofacial surgery that are relevant to the treatment and care of dental patients. Most states accept AMA constituents as approved sponsors for continuing dental education credit. If you have questions, your state dental board can confirm eligibility of this course.

- **Designation Statement** - AO North America designates this live educational activity for a maximum of 21.00 **AMA PRA Category 1 Credits™**. Physicians should claim only the credit commensurate with the extent of their participation in the activity.

The Continuing Medical Education (CME) mission of AO North America (AONA®) is to provide comprehensive multidisciplinary needs based education to surgeons, fellows, and residents in the specialties of orthopedic, hand, craniomaxillofacial, spine, neurosurgery, and veterinary surgery in the areas of trauma (i.e.), operative reduction and fixation), degenerative disorders, deformities, tumors, and reconstruction.

Expected results of AONA's CME activities for surgeons, fellows, and residents are to:

- Increase their knowledge base and surgical skill level
- Improve competence by applying advances of knowledge in patient care in the areas of trauma, degenerative disorders, deformities, tumors, and reconstructive surgical techniques
- Address practice performance gaps by improving management of aspects of traumatic injuries and musculoskeletal disorders (i.e., pre-operative planning to post-operative care)

## Learning Objectives

Upon completion, participants should be able to:

- Identify basic concepts and the science of osteoporosis and adapt treatment in line with the biology of aging bone
- Explain co-managed care of the geriatric fracture patient by recognizing co-morbidities and poly-pharmacy
- Apply basic science in the surgical care of fragility fractures
- Build a system of care appropriate to fragility fractures and discuss strategies for implementation of a co-managed geriatric fracture program
- Address secondary prevention such as osteoporosis, malnutrition and falls

## Faculty



### Kates, Stephen - Co-Chairperson

MD  
Dr  
Professor and Chair of Orthopaedic Surgery  
Department of Orthopaedics  
Virginia Commonwealth University  
Richmond, Virginia

Dr. Kates is Professor and Chairman of Orthopaedic Surgery at Virginia Commonwealth University. He is a graduate of Northwestern University Medical School and did his residency training at Northwestern University and the University of Rochester. He is Editor of Geriatric Orthopaedic Surgery and Rehabilitation and is past president of the International Geriatric Fracture Society. Dr. Kates serves as the PI the AO Trauma Clinical Priority Program (CPP) on Bone Infection and Dr Kates along with research partners won the 2015 Clinical Orthopaedics and Related Research/ Orthopaedic Research Society Richard Brand Award for the most outstanding clinical orthopaedic research paper, "A multiplex assay of host immunity against Staph aureus for Osteomyelitis patients". He serves as the national leader of the American College of Surgeons NSQIP/AAOS/OTA national focused registry on hip fractures. He is a global and national thought leader in Geriatric Fracture Care and the original developer of the Geriatric Fracture Center Model of Care. The program has inspired many hospitals to emulate it in the US, UK, Europe, Latin America and Asia.



### Mendelson, Daniel - Co-Chairperson

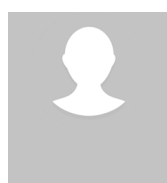
MS, MD, FACP  
Dr.  
Division of Geriatrics, Department of Medicine, University of Rochester, School of Medicine & Dentistry  
Associate Chief of Medicine, Highland Hospital  
Co-director Geriatric Fracture Center, Highland Hospital  
Director, Palliative Care, Highland Hospital  
Rochester, New York



### Sirkin, Michael - Evaluator

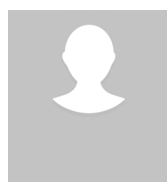
MD  
Orthopaedic Trauma  
Professor, University of South Florida  
Morsani College of Medicine  
Lehigh Valley Orthopedic Institute  
East Stroudsburg, Pennsylvania

Dr. Sirkin is a graduate of University of Medicine and Dentistry of New Jersey-New Jersey Medical School and then stayed at the New Jersey Medical School for his orthopedic residency. He continued his training where he completed his fellowship in orthopedic trauma in Tampa at the Florida Orthopedic Institute. His practice consists of all areas of orthopedic trauma including complex fracture care and associated complications with a focus on long bone infections. Currently he works at Lehigh Valley Orthopedic Institute where he does trauma surgery in the Poconos. He is frequently an invited speaker on the topic of acute and chronic osteomyelitis and the treatment of these infections. He has held numerous administrative positions both within the hospital and within his faculty practice. Jobs he has been president of the medical staff, Chief medical informatics office, compliance office for facility practice, and secretary for the faculty practice. He also is intimately involved with managed care within the practice and the hospital.



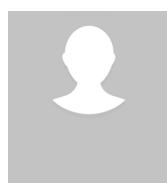
### Blauth, Michael - Lecturer

MD  
Prof  
Department of Trauma Surgery  
Innsbruck Medical University  
Innsbruck



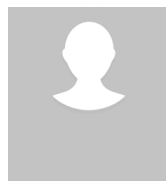
### Clark, Nathan - Lecturer

MD  
University of Rochester Medical Center  
Anesthesiology  
Rochester, New York



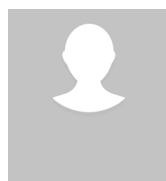
### Colvin, Perry - Lecturer

MD  
Medical Director  
Inpatient Hip Fracture and Geriatric Consultation Service  
Division of Geriatric Medicine and Gerontology  
Johns Hopkins University  
Baltimore, Maryland

**Fain, Mindy - Lecturer**

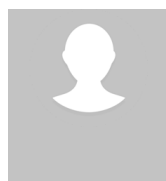
MD

Co-Director, Az Center on Aging  
Chief, Geriatrics, General Internal Medicine and Palliative Medicine  
University of Arizona College of Medicine  
Tucson, Arizona

**Gleason, Lauren - Lecturer**

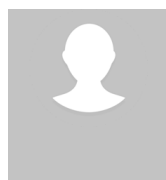
MD, MPH

Assistant Professor  
Department of Medicine  
Section of Geriatrics and Palliative Medicine  
The University of Chicago Medicine  
Chicago, Illinois

**Gravenstein, Stefan - Lecturer**

MD, MPH, MA, FACP

Professor of Medicine and Health Policy Services and Research  
Interim Chief, Division of Geriatrics and Palliative Care  
Case Western Reserve University  
Director of Center for Geriatrics and Palliative Care  
University Hospitals Case Medical Center  
Cleveland, Ohio

**McNicoll, Lynn - Lecturer**

MD, FRCPC

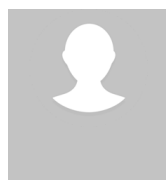
Associate Professor  
Department of Medicine  
Division of Geriatrics and Palliative Medicine  
Alpert Medical School of Brown University  
Providence, Rhode Island

**Mears, Simon - Lecturer**

MD, PhD

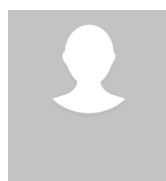
Department of Orthopaedic Surgery  
University of Arkansas for Medical Sciences  
Little Rock, Arkansas

Dr. Simon Mears is a board certified orthopaedic surgeon at the University of Arkansas for Medical Sciences as well as a professor of orthopaedic surgery in the College of Medicine at UAMS. He serves there as Vice Chair for Patient Safety and Quality. His special interests include total hip and knee replacement, hip fracture care, and geriatric orthopaedics. Dr. Mears earned a Medical degree and a Ph.D. degree in Neurobiology from the University of Pittsburgh. He completed his orthopaedic residency at the Johns Hopkins University School of Medicine. He completed a fellowship in orthopaedic traumatology at the R. Adams Cowley Shock Trauma Center at the University of Maryland as well as a second fellowship in hip and knee replacement at the Mayo Clinic. He has won the prestigious Jahnigen Award in geriatric medicine. Dr. Mears practiced at the Johns Hopkins University for ten years and served there as Chairman of Orthopaedic Surgery at the Johns Hopkins Bayview Medical Center. Dr. Mears specializes in hip and knee replacement including both primary and revision surgery. His research interests include the clinical outcomes of geriatric patients and the biomechanics of fixation in osteoporotic bone. He is a previous president of the International Geriatric Fracture Society and Deputy Editor for the Journal Geriatric Orthopaedic Surgery and Rehabilitation. He is a member of the Hip Society.

**Meinberg, Eric - Lecturer**

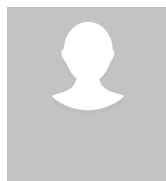
MD

Professor  
Zuckerberg San Francisco General Hospital  
San Francisco, California

**Muniak, Jennifer - Lecturer**

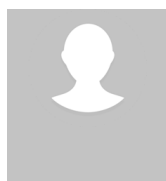
MD

Senior Instructor of Medicine  
Division of Geriatrics  
University of Rochester  
Highland Hospital  
Rochester, New York

**Nicholas, Joseph - Lecturer**

MD, MPH

Geriatrics Division, University of Rochester  
Medical Director, Highlands at Brighton Skilled Nursing Facility  
Rochester, New York

**Reyes, Bernardo - Lecturer**

MD

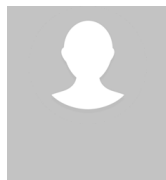
Florida Atlantic University  
Department of Biomedical Science  
Associate Director Geriatrics and Palliative Care  
Boca Raton, Florida

**Schelkun, Steven - Lecturer**

MSc, MD

Orthopaedic Surgeon  
Department of Orthopaedic Surgery  
Kaiser Permanente Medical Center San Diego  
Coronado, California

Retired Naval Orthopaedic Surgeon, (Captain) Retired Staff Orthopaedic Surgeon, Kaiser Permanente Medical Center, San Diego. Involved in AO Education since 1984. Past Chairman, AOTrauma Education Commission Senior Trustee, AO Foundation Lives in Coronado, California. Board of Directors, Coronado Yacht Club Loves sailing, golf, travel, teaching and fine wine.

**Suhm, Norbert - Lecturer**

MD

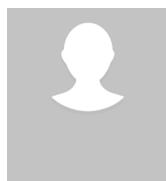
Prof Dr med  
Department of Traumatology  
University Hospital  
&  
Fracture Liaison Service  
Missionsstrasse 24

Basel

**Switzer, Julie - Lecturer**

MD

Director of Geriatric Orthopaedic Trauma,  
Regions Hospital  
Saint Paul, Minnesota

**Wright, Douglas - Lecturer**

MD

Hip Fracture Service  
University of Maryland  
Upper Chesapeake Medical Center  
Bel Air, Maryland

## AO NA Disclaimer Information

### Faculty Disclosure:

It is the policy of AO North America to abide by the Accreditation Council for Continuing Medical Education Standards for Commercial Support. Standard 2: "Disclosures Relevant to Potential Commercial Bias and Relevant Financial Relationships of Those with Control over CME Content," requires all planners, including course directors, chairs, and faculty, involved in the development of CME content to disclose their relevant financial relationships prior to participating in the activity. Relevant financial relationships will be disclosed to the activity audience. The intent of the disclosure is not to prevent a faculty with a relevant financial or other relationship from teaching, but to provide participants with information that might be of importance to their evaluation of content. All potential conflicts of interest have been resolved prior to the commencement of this activity.

### Off-Label / Experimental Discussions:

Some medical devices used for teaching purposes and/or discussed in AO North America's educational activities may have been cleared by the FDA for specific uses only or may not yet be approved for any purpose. Faculty may discuss off-label, investigational, or experimental uses of products/devices in CME certified educational activities. Faculty have been advised that all recommendations involving clinical medicine in this CME activity are based on evidence that is accepted within the profession of medicine as adequate justification for their indications and contraindications in the care of patients.

All scientific research referred to, reported or used in this CME activity in support or justification of a patient care recommendation conforms to the generally accepted standards of experimental design, data collection and analysis.

### Disclaimer:

AONA does not endorse nor promote the use of any product/device of commercial entities. Equipment used in this course is for teaching purposes only with the intent to enhance the learning experience.

### USE THE BELOW TEXT FOR DIDACTIC COURSES ONLY!

The opinions or views expressed in this live continuing medical education activity are those of the faculty and do not necessarily reflect the opinions or recommendations of AO North America or any commercial supporter. The certificate provided pertains only to the participants' completion of the course.

### Conflict of Interest Resolution Statement:

When individuals in a position to control or influence the development of the content have reported financial relationships with one or more commercial interests, AO North America utilizes a process to identify and resolve potential conflicts to ensure that the content presented is free of commercial bias.

### Liability Statement:

AO North America faculty and staff assume no personal liability for the techniques or the use of any equipment and accessories used for teaching purposes in the laboratory. The certificate provided pertains only to the participants' completion of the course and does not, in any way, attest to the proficiency of the participants' clinical experience.

### Laboratory Waiver:

To participate in this surgical skills course, you will be required to sign a waiver of liability prior to the course. In order to participate, AONA's policy mandates that every individual must wear appropriate protective garments provided by AO NA during the lab sessions. Participants who do not sign the waiver and wear protective garments will not be allowed to participate in the laboratory sessions.

### Human Anatomic Specimens:

This course will involve exposure to and contact with human anatomic specimens. These specimens are being utilized for purposes of teaching and learning and are to be treated with the utmost respect. Participants should be familiar with and understand the potential risks involved and will be required to observe all customary safety procedures.

### Animal Anatomic Specimens:

This course will involve exposure to and contact with animal anatomic specimens. These specimens are being utilized for purposes of teaching and learning and are to be treated with the utmost respect. Participants should be familiar with and understand the potential risks involved and will be required to observe all customary safety procedures.

## Acknowledgment

### In-Kind Support

AO North America gratefully acknowledges in-kind support for equipment and technical staff from J&JMedTech.

### Educational Grant

AO North America gratefully acknowledges funding for its education activities from the AO Foundation. The AO Foundation receives funding for education from Synthes GmbH.