



Principles of Operative Treatment of Craniomaxillofacial Trauma and Reconstruction



October 13, 2012 - October 14, 2012
Secaucus, New Jersey, USA

While a large number of CMF fractures are commonly the result of traumatic injury, many CMF surgeries are performed to address defects or secondary corrections. The diagnosis and treatment of these issues can present difficult challenges requiring multiple approaches. The most common treatment currently available is rigid internal fixation.

The principles courses are designed to equip surgeons with the state-of-the-art skills and techniques for treating and managing CMF fractures from trauma, as well as congenital defects, secondary correction of injuries and aesthetic reconstruction. Highlights of the course will include sessions on anatomy, biomechanics, surgical approaches and principles of internal fixation of the mandible and midface.

Experts in the field of CMF Surgery will compare and contrast current methods and provide indications for the use of these techniques. The program will include didactic sessions, practical exercises and small group discussions (SGD). These SGD compliment both the lectures and the practical exercises by discussing the four AO Principles of Fracture Fixation:

- anatomic Reduction of the fracture fragments, particularly joint fractures;
- stable fixation to ensure proper healing of the fracture allowing surrounding tissue to move and strengthen;
- atraumatic surgical technique to preserve blood supply to the bone fragments and soft tissue; and
- early, pain free mobilization returning the patient to function as soon as possible.

Target Audience:

Enrollment is open to both practicing surgeons and surgeons in training in the fields of OMFS, OTO, PRS, Ophthalmology, Oculoplastics, and Veterinary Medicine.

Event Summary

Tuition:

Level Name: Participant - Craniomaxillofacial
Pricing Tier: Resident
Tuition: \$0.00

Level Name: Participant - Craniomaxillofacial
Pricing Tier: Attending
Tuition: \$0.00

Course Prerequisite(s):

No Prerequisites

Venue:

Crowne Plaza Meadowlands
Hotel
Two Harmon Plaza
Secaucus, NJ, USA
Phone Number: 201-348-6900

Language(s):

English

Directly Provided by:



Professional Level Prerequisite(s):

No Prerequisites

CME

Continuing Education Credit: 12.50



- AO North America is accredited by the Accreditation Council for Continuing Medical Education to provide continuing medical education for physicians.

Below Wording CMF Only- Continuing Education Dental Credit Statement..

As an Accreditation Council for Continuing Medical Education (ACCME) accredited provider, AO North America meets the definition of a constituent or component organization of the AMA and thereby meets most state dental board requirements of an approved sponsor of continuing education. This course is focused on clinical issues in oral-maxillofacial surgery that are relevant to the treatment and care of dental patients. Most states accept AMA constituents as approved sponsors for continuing dental education credit. If you have questions, your state dental board can confirm eligibility of this course.

- **Designation Statement** - AO North America designates this live educational activity for a maximum of 12.50 **AMA PRA Category 1 Credits™**. Physicians should claim only the credit commensurate with the extent of their participation in the activity.

The Continuing Medical Education (CME) mission of AO North America (AONA®) is to provide comprehensive multidisciplinary needs based education to surgeons, fellows, and residents in the specialties of orthopedic, hand, craniomaxillofacial, spine, neurosurgery, and veterinary surgery in the areas of trauma (i.e.), operative reduction and fixation), degenerative disorders, deformities, tumors, and reconstruction.

Expected results of AONA's CME activities for surgeons, fellows, and residents are to:

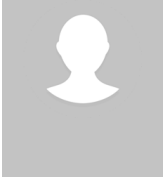
- **Increase their knowledge base and surgical skill level**
- **Improve competence by applying advances of knowledge in patient care in the areas of trauma, degenerative disorders, deformities, tumors, and reconstructive surgical techniques**
- **Address practice performance gaps by improving management of aspects of traumatic injuries and musculoskeletal disorders (i.e., pre-operative planning to post-operative care)**

Learning Objectives

Upon completion, participants should be able to:

- describe the principles of stable internal fixation as outlined by the AO
- define the biological and mechanical aspects of fracture healing
- discuss the problems, complications and intraoperative difficulties that can result from internal fixation
- explain preoperative planning methods and outcome analysis
- apply the psychomotor skills developed in the practical exercises into surgical practice

Faculty



Casino, Anthony - Chairperson

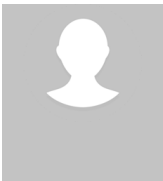
DDS
Chief, Division of Oral & Maxillofacial Surgery
Stony Brook University Medical Center
Stony Brook, New York



Butts, Sydney - Co-Chairperson

MD, FACS
Professor
Chief, Division of Facial Plastic and Reconstructive Surgery
Department of Otolaryngology
SUNY Downstate Health Sciences University
Brooklyn, New York

Sydney C. Butts, MD serves as the chief of the Division of Facial Plastic and Reconstructive Surgery at University Hospital Brooklyn/SUNY Downstate and Kings County Hospital Center a position she has held since August 2009. She is currently a Professor of Otolaryngology at SUNY Downstate. She earned her medical degree at the Yale University School of Medicine graduating cum laude. Dr. Butts completed a residency in otolaryngology at the Albert Einstein College of Medicine/Montefiore Medical Center followed by fellowship training in facial plastic and reconstructive surgery at SUNY Upstate Medical University in Syracuse. She is Board certified in otolaryngology and is a diplomate of the American Board of Facial Plastic and Reconstructive Surgery. Dr. Butts' clinical focus includes the management of cleft lip and palate anomalies, adult and pediatric maxillofacial trauma, local/regional flap surgery especially in skin cancer patients, rhinoplasty and the management of other soft tissue lesions that require a reconstructive approach, having lectured nationally and internationally on these topics. She is a member of the, American Academy of Otolaryngology-Head and Neck Surgery, American Cleft Palate-Craniofacial Association and the American Academy of Facial Plastic and Reconstructive Surgery (AAFPRS). She has also served on international humanitarian surgical missions in Asia and Africa.



Castiglione, Charles - Co-Chairperson

MD, FACS
Assoc Clinical Professor of Surgery
University of Connecticut
Chief of Plastic Surgery, Hartford Hospital
Chief of Plastic Surgery, Connecticut Children's Medical Center
Hartford, Connecticut



Kushner, George - Director

DMD, MD
Professor and Chairman
Oral and Maxillofacial Surgery
University of Louisville
Louisville, Kentucky

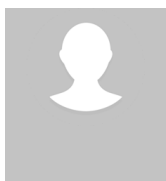
Dr. Kushner is a native of Pennsylvania. He graduated from Pennsylvania State University and Temple University School of Dentistry. Following his completion of his Oral and Maxillofacial Surgery residency at the University of Louisville he did a fellowship at the Oral Surgery Institute in Nashville, TN in TMD under Jeffery Carter D.M.D., M.D. After his fellowship he enrolled and graduated from medical school at The University of Alabama. He completed his general surgery core year at Brown University/Rhode Island Hospital. He came back to Louisville in 1993, becoming the Oral and Maxillofacial Surgery Program Director in 1994. He achieved the rank of full professor in 2007. He is a Diplomat, Fellow, or member of AAOMS, ADEA, SSOMS, and the American College of Surgeons, holding leadership positions in most of these organizations. Dr Kushner is currently Professor and Chairman of Oral and Maxillofacial Surgery at the University of Louisville. Dr. Kushner lectures worldwide and is well published on a variety of topics in Oral and Maxillofacial Surgery. He is a Trustee of the AO Foundation, an international organization committed to excellence in musculoskeletal surgery. Dr. Kushner has become the "go to" surgeon in this area of the country for complex injuries, deformities, and complications.

**Aziz, Shahid - Lecturer**

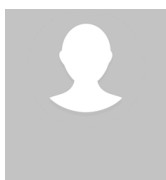
DMD, MD, FACS, FRCS(Ed), FICD
 Professor of Otolaryngology, Hackensack Meridian School of Medicine
 Division Director, Oral & Maxillofacial Surgery, Hackensack Meridian Health
 Clinical Professor, Oral & Maxillofacial Surgery
 Rutgers School of Dental Medicine
 Visiting Professor
 Update Dental College Dhaka BD

Hackensack, New Jersey

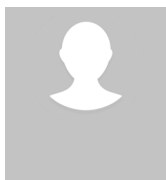
Shahid Aziz is the co-founder and President of Smile Bangladesh. A 1st generation Bengali-American, Shahid has been leading a small team of surgeons, anesthesiologists, and nurses to Bangladesh since 2006. To date, his teams have treated about 2000 children and adults with cleft lip and palate deformities. Shahid is a Professor of Otolaryngology, Hackensack Meridian School of Medicine, Clinical Professor of Oral and Maxillofacial Surgery, is a Diplomat of the American Board of Oral and Maxillofacial Surgery, a Fellow of the American College of Surgeons, a Fellow of the International College of Dentists, and Fellow of the Royal College of Surgeons, Edinburgh. Shahid is also Division Director of OMFS at Hackensack University Medical Center. He is a graduate of the Lawrenceville School and Rutgers College. Shahid received his dental degree from Harvard University School of Dental Medicine and his medical degree from Columbia University College of Physicians and Surgeons. He completed his general surgery and oral/maxillofacial surgery training at New York-Presbyterian Hospital-Columbia University Medical Center. He has authored or co-authored over 50 peer reviewed journal articles and 20 book chapters. Shahid's clinical area of expertise includes facial trauma, reconstruction, and orthognathic surgery. He currently serves as past President of the New Jersey Society of Oral and Maxillofacial Surgeons, Chairman of the Section of Dentistry and Oral Health of the New York Academy of Medicine, and President of Smile Bangladesh.

**Chalian, Ara - Lecturer**

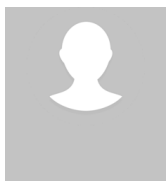
MD
 Professor of Otolaryngology
 Hospital of the Univ of Pennsylvania
 Philadelphia, Pennsylvania

**Chidylo, Stephen - Table Instructor**

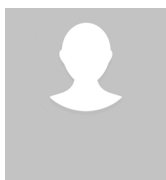
MD, DDS, FACS
 Dr
 Jersey Shore University Medical Center
 Monmouth County, New Jersey

**Granick, Mark - Lecturer**

MD
 Professor and Chief
 Division of Plastic Surgery
 New Jersey Medical School
 Newark, New Jersey

**Greenberg, Alex - Lecturer**

DDS
 Assistant Clinical Professor
 Oral and Maxillofacial Surgery
 College of Dental Medicine
 Columbia University
 New York, New York

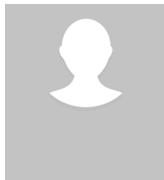
**Kahugu, Eric - Lecturer**

Dr, M Med (Surgery), BDS, FFD, FDS RCS(Ed)
 Dr
 The Maxillofacial Clinic, Upper Hill Medical Centre and Nairobi Hospital
 Nairobi

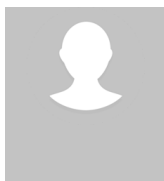
**Miles, Brett - Lecturer**

DDS, MD, FACS
 Professor and Chair
 Department of Otolaryngology & Head and Neck Surgery
 Northwell Health
 Lenox Hill Hospital/Manhattan Eye Ear and Throat Hospital
 New York, New York

Dr. Miles is a dual trained Oral and Maxillofacial surgeon, and Otolaryngologist Head and Neck surgeon and is Professor and Chair of the Department of Otolaryngology, in the Division of Head and Neck Oncology at at Northwell Health in New York, Lenox Hill Hospital/Manhattan Eye Ear and Throat. He is currently serving on the American Head and Neck Society Microvascular Reconstruction Board and has clinical expertise in head and neck oncology/microvascular surgery, and complex reconstructive surgery and oral/maxillofacial surgery/trauma.

**Moore, Charles - Lecturer**

MD
Chief of Service
Department of Otolaryngology
Grady Health System
Emory University
Atlanta, Georgia

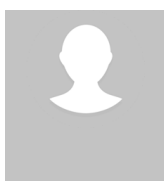
**Patel, Sameer - Table Instructor**

MD, FACS
Assistant Clinical Professor
Surgical Oncology
Plastic and Reconstructive Surgery
Fox Chase Cancer Center
Philadelphia, Pennsylvania

**Stanton, David - Lecturer**

DMD, MD, FACS
Department of Oral & Maxillofacial Surgery
University of Pennsylvania
Philadelphia, Pennsylvania

Dr. Stanton is Associate Professor of Oral and Maxillofacial Surgery. He is a graduate of both the University of Pennsylvania School Of Medicine and the School of Dental Medicine. He completed his residency training at the University of Pennsylvania and a fellowship in maxillofacial cosmetic surgery at Northwestern University. He is the former program director of the Oral and Maxillofacial Surgery residency program at the University of Pennsylvania. He has lectured nationally on several of his fields of interest, including cosmetic facial surgery, obstructive sleep apnea, and maxillofacial trauma. His research interests include obstructive sleep apnea, hair transplantation and facial trauma. He is a current member of the examination committee of the American Board of Oral and Maxillofacial Surgery. He previously served as chair of the Residency Review Committee for oral & maxillofacial surgery programs & a commissioner on the Commission on Dental Accreditation.

**Stewart, Michael - Lecturer**

MD, MPH
Professor & Chairman of Otolaryngology - Head and Neck Surgery
Weill Cornell Medical College
New York, New York

**Taub, Peter - Lecturer**

MD, MS, FACS, FAAP
Professor of Surgery, Pediatrics, Dentistry, and Neurosurgery
Chief, Pediatric and Craniomaxillofacial Surgery
Co-Director, Mount Sinai Cleft & Craniofacial Center
Division of Plastic and Reconstructive Surgery
Mount Sinai Healthcare System
Kravis Children's Hospital

New York, New York

AO NA Disclaimer Information

Faculty Disclosure:

It is the policy of AO North America to abide by the Accreditation Council for Continuing Medical Education Standards for Commercial Support. Standard 2: "Disclosures Relevant to Potential Commercial Bias and Relevant Financial Relationships of Those with Control over CME Content," requires all planners, including course directors, chairs, and faculty, involved in the development of CME content to disclose their relevant financial relationships prior to participating in the activity. Relevant financial relationships will be disclosed to the activity audience. The intent of the disclosure is not to prevent a faculty with a relevant financial or other relationship from teaching, but to provide participants with information that might be of importance to their evaluation of content. All potential conflicts of interest have been resolved prior to the commencement of this activity.

Off-Label / Experimental Discussions:

Some medical devices used for teaching purposes and/or discussed in AO North America's educational activities may have been cleared by the FDA for specific uses only or may not yet be approved for any purpose. Faculty may discuss off-label, investigational, or experimental uses of products/devices in CME certified educational activities. Faculty have been advised that all recommendations involving clinical medicine in this CME activity are based on evidence that is accepted within the profession of medicine as adequate justification for their indications and contraindications in the care of patients.

All scientific research referred to, reported or used in this CME activity in support or justification of a patient care recommendation conforms to the generally accepted standards of experimental design, data collection and analysis.

Disclaimer:

AONA does not endorse nor promote the use of any product/device of commercial entities. Equipment used in this course is for teaching purposes only with the intent to enhance the learning experience.

USE THE BELOW TEXT FOR DIDACTIC COURSES ONLY!

The opinions or views expressed in this live continuing medical education activity are those of the faculty and do not necessarily reflect the opinions or recommendations of AO North America or any commercial supporter. The certificate provided pertains only to the participants' completion of the course.

Conflict of Interest Resolution Statement:

When individuals in a position to control or influence the development of the content have reported financial relationships with one or more commercial interests, AO North America utilizes a process to identify and resolve potential conflicts to ensure that the content presented is free of commercial bias.

Liability Statement:

AO North America faculty and staff assume no personal liability for the techniques or the use of any equipment and accessories used for teaching purposes in the laboratory. The certificate provided pertains only to the participants' completion of the course and does not, in any way, attest to the proficiency of the participants' clinical experience.

Laboratory Waiver:

To participate in this surgical skills course, you will be required to sign a waiver of liability prior to the course. In order to participate, AONA's policy mandates that every individual must wear appropriate protective garments provided by AO NA during the lab sessions. Participants who do not sign the waiver and wear protective garments will not be allowed to participate in the laboratory sessions.

Human Anatomic Specimens:

This course will involve exposure to and contact with human anatomic specimens. These specimens are being utilized for purposes of teaching and learning and are to be treated with the utmost respect. Participants should be familiar with and understand the potential risks involved and will be required to observe all customary safety procedures.

Animal Anatomic Specimens:

This course will involve exposure to and contact with animal anatomic specimens. These specimens are being utilized for purposes of teaching and learning and are to be treated with the utmost respect. Participants should be familiar with and understand the potential risks involved and will be required to observe all customary safety procedures.

Acknowledgment

In-Kind Support

AO North America gratefully acknowledges in-kind support for equipment and technical staff from J&JMedTech.

Educational Grant

AO North America gratefully acknowledges funding for its education activities from the AO Foundation. The AO Foundation receives funding for education from Synthes GmbH.