



AO CMF NA Blended Course—Management of Facial Trauma



March 14, 2026 - March 15, 2026

Chicago, Illinois, USA

This course provides learners with the fundamental knowledge and principles for the treatment of craniomaxillofacial fractures and their complications. It covers diagnostic and treatment principles for midface and mandibular fractures, as well as the prevention and treatment of complications.

The learning experience is delivered through an interactive online learning program of approximately eight hours, followed by a one-day (in total) face to face event which includes hands-on practical lab exercises and expert-led small group discussions.

1. Online Preparations—4 weeks prior to the face-to-face event

During these 4 weeks, participants are **REQUIRED** to complete a self-assessment and conduct online self-study, including required reading material, viewing videos and completion of surgical simulation modules. Participants will receive a link to the learning materials from their event organizer.

2. Face-to-face event—1.5 days

*****COMPLETION OF ALL ONLINE PRECOURSE WORK IS MANDATORY FOR ATTENDANCE AT THE FACE-TO-FACE EVENT*****

The face-to-face event is delivered through a combination of small group discussions and practical exercises. This combination enables participants to hear, discuss, and apply the concepts of facial trauma management.

3. Online Follow-up

During the week after the course, participants will complete an online evaluation and post-course assessment.

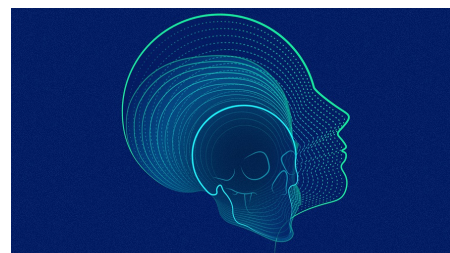
Goal of the Course

The goal of this AO CMF NA course is to address the core concepts necessary to manage acute facial trauma.

Target Audience

This course is designed for surgeons in training in the fields of Oral and Maxillofacial Surgery, Otolaryngology, Plastics and Reconstruction, Ophthalmology and Oculoplastics. Some practicing surgeons may also find this course beneficial to their professional and clinical development.

The new 'blended' MFT course format includes **REQUIRED** online coursework and learning materials provided prior to the face-to-face event which are **MANDATORY** for completion and attendance at the course.



Event Summary

Tuition:

Level Name: Participant - Craniomaxillofacial

Pricing Tier: Attending

Tuition: \$475.00

Level Name: Participant - Craniomaxillofacial

Pricing Tier: Resident

Tuition: \$350.00

Course Prerequisite(s):

No Prerequisites

Venue:

Hilton Chicago O'Hare Airport

10000 W. O'Hare Ave

Chicago, Illinois, USA

Phone Number: 773-686-8000

<https://www.hilton.com/en/hotels/chiohhh-hilton-chicago-ohare-airport/>

Language(s):

English

Directly Provided by:



North America

Professional Level Prerequisite(s):

No Prerequisites

CME

Continuing Education Credit: 13.25



- AO North America is accredited by the Accreditation Council for Continuing Medical Education to provide continuing medical education for physicians.

As an Accreditation Council for Continuing Medical Education (ACCME) accredited provider, AO North America meets the definition of a constituent or component organization of the AMA and thereby meets most state dental board requirements of an approved sponsor of continuing education. This course is focused on clinical issues in oral-maxillofacial surgery that are relevant to the treatment and care of dental patients. Most states accept AMA constituents

as approved sponsors for continuing dental education credit. If you have questions, your state dental board can confirm eligibility of this course.

- **Designation Statement** - AO North America designates this live educational activity for a maximum of 13.25 **AMA PRA Category 1 Credits™**. Physicians should claim only the credit commensurate with the extent of their participation in the activity.

The Continuing Medical Education (CME) mission of AO North America (AONA®) is to provide comprehensive multidisciplinary needs based education to surgeons, fellows, and residents in the specialties of orthopedic, hand, craniomaxillofacial, spine, neurosurgery, and veterinary surgery in the areas of trauma (i.e.), operative reduction and fixation), degenerative disorders, deformities, tumors, and reconstruction.

Expected results of AONA's CME activities for surgeons, fellows, and residents are to:

- Increase their knowledge base and surgical skill level
- Improve competence by applying advances of knowledge in patient care in the areas of trauma, degenerative disorders, deformities, tumors, and reconstructive surgical techniques
- Address practice performance gaps by improving management of aspects of traumatic injuries and musculoskeletal disorders (i.e., pre-operative planning to post-operative care)

Learning Objectives

Upon completion, participants should be able to:

- Diagnose facial injury through history, physical examination, and diagnostic investigations
- Formulate a treatment plan (operative and non-operative)
- Perform the specific treatment for facial trauma
- Modify the treatment plan when necessary
- Manage patient follow-up and rehabilitation
- Identify and manage complications

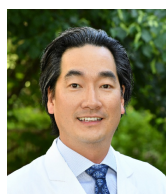
Faculty



Teshima, Tara Lynn - Chairperson

MD, MSc, FRCSC
Plastic and Reconstructive Surgeon
University of British Columbia
Vancouver, British Columbia

Dr. Teshima graduated from the University of Alberta Faculty of Medicine in 2008 and subsequently completed her residency training in Plastic and Reconstructive Surgery at the University of Alberta in 2013. Prior to medical school, she completed a Master's degree in Virology. Dr. Teshima then pursued fellowship training in Adult Craniofacial Trauma at Sunnybrook Health Sciences Center in Toronto. Her clinical focus is in adult facial trauma, oncology, and adult vascular malformations. Her research interests currently focuses on orbit and the management of vascular malformations. She is a recent graduate of the Global Surgical Leadership program from Harvard Medical School and is interested in medical education and virtual surgical training using bio-models. Since 2013, Dr. Teshima visits the Ukraine on a yearly basis to help wounded soldiers with ballistic injuries to the head and neck.



Chi, John - Co-Chairperson

MD, MA
Professor & Chief
Division of Facial Plastic & Reconstructive Surgery
Department of Otolaryngology - Head & Neck Surgery
WashU Medicine
St. Louis, Missouri

Dr. John Chi is Professor and Chief of Facial Plastic & Reconstructive Surgery in the Department of Otolaryngology – Head & Neck Surgery at Washington University in St. Louis. His research interests include medical decision making, facial reconstruction, facial paralysis, and quality of life following facial plastic surgery. Prior to medicine, Dr. Chi served as a science teacher in an underserved community in New York City. He earned his master's degree in education from the City College of New York and his master's degree in population health sciences from Washington University in St. Louis. Dr. Chi's humanitarian work has taken him to China, Ecuador, India and Guatemala to care for medically underserved cleft lip and palate patients.



MacLeod, Stephen - Co-Chairperson

BDS, MBChB, FDSRCS, FRCS, FACS, FFST
Professor
Chief, Oral and Maxillofacial Surgery and Dental Medicine
Program Director
Oral and Maxillofacial Surgery Residency
Loyola University
Maywood, Illinois

Stephen MacLeod BDS, MB ChB, FDS RCS (ED&ENG), FRCS (ED), FFST RCS (ED), FACS, FFST Stephen MacLeod is the Chief of Oral & Maxillofacial Surgery and Dental Medicine and Program Director of the Oral and Maxillofacial Surgery Residency Program at Loyola University Medical Center Dr. MacLeod is a graduate of the University of Dundee School of Dentistry. His medical degree is from the University of Aberdeen in Scotland. Dr MacLeod completed his training in oral and maxillofacial surgery in Scotland and was an AO Fellow at the University of Louisville. Dr. MacLeod has been actively involved in research, postgraduate training and education. He has multiple publications and has presented his original research at both national and international meetings. Dr. MacLeod practices full-scope oral and maxillofacial surgery. His clinical interests are reconstructive surgery, maxillofacial trauma, and benign bone pathology. He is particularly involved in faculty development and training in non-technical skills for surgeons.



Jones, Lamont - Director

MD, MBA
Department of Otolaryngology, Head and Neck Surgery
Henry Ford Hospital Facial Plastic and Reconstructive Surgery
Director, Cleft and Craniofacial Clinic
Clinical Professor Department of Otolaryngology Wayne State University School of Medicine
Clinical Professor Department of Surgery Michigan State University
Detroit, Michigan

Lamont R. Jones, M.D., MBA, received his medical degree and completed otolaryngology residency at the University of Michigan, Ann Arbor. He completed a fellowship in Facial Plastic and Craniofacial Reconstructive Surgery at SUNNY UpState Medical University. Dr. Jones also completed an executive MBA from the Eli Broad College of Business at Michigan State University, in 2016. His clinical interests include the treatment of congenital facial anomalies, facial rejuvenation and facial trauma. Dr. Jones' interests also include the treatment of keloids and translational keloid research, for which, he was recently awarded a, 5 year \$900,00 K08 grant from the National Institute of General Medical Science. A national and international speaker, Jones has published multiple journal articles and books chapters. He holds positions in local and national medical organizations, and is involved with "Face to Face" and Kenya Relief which support international medical mission trips to countries such as Vietnam and Kenya. His mission work has been featured in the Detroit Free Press, Detroit Hour Magazine and in an hour television special, "Care and Hope, Proud Detroit Exports", on Detroit WDIV Channel 4.

Agenda

Day 1

Saturday, March 14, 2026 - 11:45 - 18:25 - (includes breaks, travel-time and meals)

| Schedule | Title | Moderator | Faculty | Room |
|---------------|--|-----------|---------|------|
| 11:45 - 12:00 | Registration / Light Refreshments | | | |
| 12:00 - 12:10 | Welcome and Introduction | | | |
| 12:10 - 12:15 | Travel to Small Group Discussions | | | |
| 12:15 - 15:40 | Mid and Upper Facial Trauma | | | |
| 12:15 - 14:15 | Small Group Discussions A: Zygomatic, Orbit, Zygoma and Orbit, and Le Fort | | | |
| 14:15 - 14:20 | Travel to Lab | | | |
| 14:20 - 15:40 | PRACTICAL EXERCISE 1: Complex Midface Fractures, Maxillomandibular Fixation Techniques (optionall) | | | |
| 15:40 - 15:55 | Coffee Break | | | |
| 15:55 - 17:40 | Mid and Upper Facial Trauma (continued) | | | |
| 15:55 - 17:40 | Small Group Discussion B: Nasoorbitoethmoid (NOE), Nasal, Frontal Sinus | | | |
| 17:40 - 18:25 | Welcome Reception | | | |

Day 2

Sunday, March 15, 2026 - 07:15 - 13:50 - (includes breaks, travel-time and meals)

| Schedule | Title | Moderator | Faculty | Room |
|---------------|--|-----------|---------|------|
| 07:15 - 07:30 | Breakfast (take to Small Groups) | | | |
| 07:30 - 10:25 | Mandibular Trauma | | | |
| 07:30 - 08:50 | Small Group Discussion C: Load-sharing, Tooth in line of Fracture/Sequencing, Condyle | | | |
| 08:50 - 08:55 | Travel to Lab | | | |
| 08:55 - 10:25 | PRACTICAL EXERCISE 2: Mandible Fractures, Load-Sharing Osteosynthesis, Symphysis with Mini-Plates, Symphysis with Lag Screw Technique, Angle Linear Fracture | | | |
| 10:25 - 10:40 | Coffee Break / Travel to Smal Groups | | | |
| 10:40 - 12:00 | Mandibular Trauma (continued) | | | |
| 10:40 - 12:00 | Small Group Discussion D: Load-bearing | | | |
| 12:00 - 12:05 | Travel to Lecture Hall / Lab | | | |
| 12:05 - 12:50 | Lunch (What is AO/Membership Talk) | | | |
| 12:50 - 13:50 | Mandibular Trauma (continued) | | | |
| 12:50 - 13:50 | PRACTICAL EXERCISE 3: Complex fractures of the mandible – Load-bearing osteosynthesis | | | |
| 13:50 - 13:50 | Course Adjourns | | | |

AO NA Disclaimer Information

Faculty Disclosure:

It is the policy of AO North America to abide by the Accreditation Council for Continuing Medical Education Standards for Commercial Support. Standard 2: "Disclosures Relevant to Potential Commercial Bias and Relevant Financial Relationships of Those with Control over CME Content," requires all planners, including course directors, chairs, and faculty, involved in the development of CME content to disclose their relevant financial relationships prior to participating in the activity. Relevant financial relationships will be disclosed to the activity audience. The intent of the disclosure is not to prevent a faculty with a relevant financial or other relationship from teaching, but to provide participants with information that might be of importance to their evaluation of content. All potential conflicts of interest have been resolved prior to the commencement of this activity.

Off-Label / Experimental Discussions:

Some medical devices used for teaching purposes and/or discussed in AO North America's educational activities may have been cleared by the FDA for specific uses only or may not yet be approved for any purpose. Faculty may discuss off-label, investigational, or experimental uses of products/devices in CME certified educational activities. Faculty have been advised that all recommendations involving clinical medicine in this CME activity are based on evidence that is accepted within the profession of medicine as adequate justification for their indications and contraindications in the care of patients.

All scientific research referred to, reported or used in this CME activity in support or justification of a patient care recommendation conforms to the generally accepted standards of experimental design, data collection and analysis.

Disclaimer:

AONA does not endorse nor promote the use of any product/device of commercial entities. Equipment used in this course is for teaching purposes only with the intent to enhance the learning experience.

USE THE BELOW TEXT FOR DIDACTIC COURSES ONLY!

The opinions or views expressed in this live continuing medical education activity are those of the faculty and do not necessarily reflect the opinions or recommendations of AO North America or any commercial supporter. The certificate provided pertains only to the participants' completion of the course.

Conflict of Interest Resolution Statement:

When individuals in a position to control or influence the development of the content have reported financial relationships with one or more commercial interests, AO North America utilizes a process to identify and resolve potential conflicts to ensure that the content presented is free of commercial bias.

Liability Statement:

AO North America faculty and staff assume no personal liability for the techniques or the use of any equipment and accessories used for teaching purposes in the laboratory. The certificate provided pertains only to the participants' completion of the course and does not, in any way, attest to the proficiency of the participants' clinical experience.

Laboratory Waiver:

To participate in this surgical skills course, you will be required to sign a waiver of liability prior to the course. In order to participate, AONA's policy mandates that every individual must wear appropriate protective garments provided by AO NA during the lab sessions. Participants who do not sign the waiver and wear protective garments will not be allowed to participate in the laboratory sessions.

Human Anatomic Specimens:

This course will involve exposure to and contact with human anatomic specimens. These specimens are being utilized for purposes of teaching and learning and are to be treated with the utmost respect. Participants should be familiar with and understand the potential risks involved and will be required to observe all customary safety procedures.

Animal Anatomic Specimens:

This course will involve exposure to and contact with animal anatomic specimens. These specimens are being utilized for purposes of teaching and learning and are to be treated with the utmost respect. Participants should be familiar with and understand the potential risks involved and will be required to observe all customary safety procedures.

Acknowledgment

In-Kind Support

AO North America gratefully acknowledges in-kind support for equipment and technical staff from J&JMedTech.

Educational Grant

AO North America gratefully acknowledges funding for its education activities from the AO Foundation. The AO Foundation receives funding for education from Synthes GmbH.