




## AO CMF NA Course—Management of Facial Trauma

 April 5, 2025 - April 6, 2025  
Columbus, Ohio, USA

This course provides learners with the fundamental knowledge and principles for the treatment of craniomaxillofacial fractures and their complications. It covers diagnostic and treatment principles for midface and mandibular fractures, as well as the prevention and treatment of complications.

### 1. Online Preparations—4 weeks prior to the face-to-face event

During these 4 weeks, it is **recommended** participants complete a self-assessment and conduct online self-study, including recommended reading material, viewing videos and completion of surgical simulation modules. Participants will receive a link to the learning materials from their event organizer.

### 2. Face-to-face event—2 days

The face-to-face event is delivered through a combination of short lectures, small group discussions, and practical exercises. This combination enables participants to hear, discuss, and apply the concepts of facial trauma management.

### 3. Online Follow-up

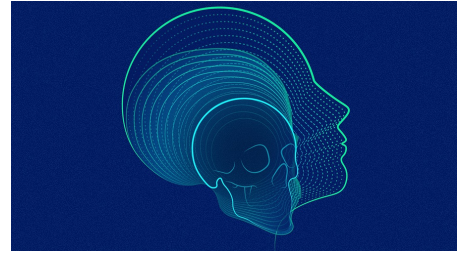
During the week after the course, participants will complete an online evaluation and post-course assessment.

### Goal of the Course

The goal of this AO CMF NA course is to address the core concepts necessary to manage acute facial trauma.

### Target Audience

This course is designed for surgeons in training in the fields of Oral and Maxillofacial Surgery, Otolaryngology, Plastics and Reconstruction, Ophthalmology and Oculoplastics. Some practicing surgeons may also find this course beneficial.



## Event Summary

#### Tuition:

Level Name: Participant - CMF  
Pricing Tier: Resident  
Tuition: \$325.00

Level Name: Participant - CMF  
Pricing Tier: Attending  
Tuition: \$450.00

#### Course Prerequisite(s):

No Prerequisites

#### Venue:

Hilton Columbus at Easton  
3900 Chagrin Drive  
Columbus, OH, USA  
Phone Number: 614-414-5000  
[www.columbusoh.hilton.com](http://www.columbusoh.hilton.com)

#### Language(s):

English

#### Directly Provided by:



#### Professional Level Prerequisite(s):

No Prerequisites

## CME

### Continuing Education Credit: 13.25



- AO North America is accredited by the Accreditation Council for Continuing Medical Education to provide continuing medical education for physicians.

As an Accreditation Council for Continuing Medical Education (ACCME) accredited provider, AO North America meets the definition of a constituent or component organization of the AMA and thereby meets most state dental board requirements of an approved sponsor of continuing education. This course is focused on clinical issues in oral-maxillofacial surgery that are relevant to the treatment and care of dental patients. Most states accept AMA constituents as approved sponsors for continuing dental education credit. If you have questions, your state dental board can confirm eligibility of this course.

- **Designation Statement** - AO North America designates this live educational activity for a maximum of 13.25 **AMA PRA Category 1 Credits™**. Physicians should claim only the credit commensurate with the extent of their participation in the activity.

**The Continuing Medical Education (CME) mission of AO North America (AONA®) is to provide comprehensive multidisciplinary needs based education to surgeons, fellows, and residents in the specialties of orthopedic, hand, craniomaxillofacial, spine, neurosurgery, and veterinary surgery in the areas of trauma (i.e., operative reduction and fixation), degenerative disorders, deformities, tumors, and reconstruction.**

**Expected results of AONA's CME activities for surgeons, fellows, and residents are to:**

- **Increase their knowledge base and surgical skill level**
- **Improve competence by applying advances of knowledge in patient care in the areas of trauma, degenerative disorders, deformities, tumors, and reconstructive surgical techniques**
- **Address practice performance gaps by improving management of aspects of traumatic injuries and musculoskeletal disorders (i.e., pre-operative planning to post-operative care)**

## Learning Objectives

**Upon completion, participants should be able to:**

- Diagnose facial injury through history, physical examination, and diagnostic investigations
- Formulate a treatment plan (operative and non-operative)
- Perform the specific treatment for facial trauma
- Modify the treatment plan when necessary
- Manage patient follow-up and rehabilitation
- Identify and manage complications

## Faculty



### Bailey, Jonathan - Chairperson

DMD, MD, FACS

Clinical Professor

Associate Medical Director, Specialty Surgery Services

Division of Oral & Maxillofacial Surgery

Division of Head & Neck Cancer

Carle Foundation Hospital

Carle Illinois College of Medicine

Urbana, Illinois

Jonathan Bailey, DMD, MD, FACS, is the associate medical director of Specialty Surgical Services at Carle Foundation Hospital in Urbana, Illinois. Dr. Bailey serves as a Clinical Professor of Surgery at Carle Illinois College of Medicine in Urbana. He completed a fellowship in Maxillofacial Oncology and Microvascular Surgery at the University of Maryland, Baltimore. He completed his residency and internship at Massachusetts General Hospital, Boston. He earned his medical degree from Harvard Medical School and Doctor of Medicine in Dentistry from Harvard School of Dental Medicine. He is board certified by American Board of Oral and Maxillofacial Surgery. Dr. Bailey's clinical practice focuses on oral cancer, reconstruction, and craniomaxillofacial trauma.



### Cordero, Joe - Co-Chairperson

MD, FACS

Professor and Chairman

Department of Otolaryngology - Head & Neck Surgery

Texas Tech University Health Sciences Center

Lubbock, Texas

Joe Cordero is a board-certified otolaryngologist with two decades of experience. He is currently a tenured professor and chairman of the Department of Otolaryngology-Head and Neck Surgery at Texas Tech University Health Sciences Center. Joe specializes in the management of complex head and neck cancer cases and reconstruction, thyroid and parathyroid disorders, and maxillofacial trauma. He's passionate about the education and training of our future otolaryngology physicians. Joe enjoys maximizing his mind, body, and spirit.



### Puente Espel, Jordi - Co-Chairperson

MD

West Tennessee Medical Group

Plastic and Reconstructive Surgery

Jackson, Tennessee

Dr. Jordi Espel is a plastic surgeon with a multicultural background and specialty certification in plastic surgery, pediatric plastic, and craniofacial surgery. He proudly completed medical school with honors at UNAM in Mexico City and successfully earned fellowship degrees from key institutions in the USA and Australia. His vast experience in reconstructive care has benefited children and adult patients all over the world, including in Africa, Mexico, Central America, and India. Prior to joining West Tennessee Medical Group, Dr. Espel worked as a pediatric plastic surgeon and reconstructive surgeon at Baptist Medical Group. He has served as a course director for the American College of Surgeons and an instructor for AO North America. Dr. Espel is a native Spanish speaker who is also fluent in English, Catalan, and French. In his spare time, Dr. Espel enjoys spending time with his wife, Cathy. His hobbies include sports, such as triathlons, swimming, and hiking.



### Jones, Lamont - Director

MD, MBA

Department of Otolaryngology, Head and Neck Surgery

Henry Ford Hospital Facial Plastic and Reconstructive Surgery

Director, Cleft and Craniofacial Clinic

Clinical Professor Department of Otolaryngology Wayne State University School of Medicine

Clinical Professor Department of Surgery Michigan State University

Detroit, Michigan

Lamont R. Jones, M.D., MBA, received his medical degree and completed otolaryngology residency at the University of Michigan, Ann Arbor. He completed a fellowship in Facial Plastic and Craniofacial Reconstructive Surgery at SUNNY UpState Medical University. Dr. Jones also completed an executive MBA from the Eli Broad College of Business at Michigan State University, in 2016. His clinical interests include the treatment of congenital facial anomalies, facial rejuvenation and facial trauma. Dr. Jones' interests also include the treatment of keloids and translational keloid research, for which, he was recently awarded a, 5 year \$900,00 K08 grant from the National Institute of General Medical Science. A national and international speaker, Jones has published multiple journal articles and books chapters. He holds positions in local and national medical organizations, and is involved with "Face to Face" and Kenya Relief which support international medical mission trips to countries such as Vietnam and Kenya. His mission work has been featured in the Detroit Free Press, Detroit Hour Magazine and in an hour television special, "Care and Hope, Proud Detroit Experts", on Detroit WDIV Channel 4.



### Cillo, Joseph - Lecturer

DMD, MPH, PhD, FACS  
 Division Chief and Residency Program Director  
 Associate Professor, Division of Oral and Maxillofacial Surgery  
 Allegheny General Hospital  
 Pittsburgh, Pennsylvania

Dr. Joseph Cillo completed his residency in Oral and Maxillofacial Surgery at the University of Texas Southwestern Medical Center/Parkland Memorial Hospital in Dallas, Texas and fellowship in Maxillofacial Tumor and Reconstructive Surgery at the University of Miami Miller School of Medicine under Dr. Robert Marx. Dr. Cillo is a Board-Certified Diplomate of the American Board of Oral and Maxillofacial Surgery for which he has held many leadership positions on the Examination Committee including Section Editor, Section Chair, and currently serves as a Director. He is a Fellow of the American Association of Oral and Maxillofacial Surgeons where he has held numerous leadership positions including Chair of the Committee of Research Planning and Technology Assessment, Chair of the Faculty Section Executive Committee and member of the Committee on Education and Training. He is a Fellow of the American Academy of Craniomaxillofacial Surgeons and the American College of Surgeons. He is currently Associate Professor of Surgery, Division Chief, and Residency Program Director of the Division of Oral and Maxillofacial Surgery at Allegheny General Hospital, a Level I trauma center located in Pittsburgh, PA.



### Gal, Thomas - Lecturer

MD, MPH, FACS  
 Division of Head and Neck Oncology,  
 Microvascular Surgery and Maxillofacial Trauma  
 Department of Otolaryngology  
 University of Kentucky  
 Lexington, Kentucky

Dr. Thomas Gal is a Professor of Otolaryngology at the University of Kentucky. He is fellowship trained in Head and Neck Oncology and Microvascular Reconstruction. His clinical interests include head and neck oncology, head and neck reconstruction, and maxillofacial trauma, particularly minimally invasive and endoscopic approaches to the maxillofacial skeleton. Dr. Gal is a Fellow of the American College of Surgeons and Board Certified in Otolaryngology-Head and Neck Surgery.



### Garcia-Rodriguez, Laura - Lecturer

MD  
 Henry Ford Hospital  
 Detroit, Michigan

Dr. Laura Garcia-Rodriguez is a double board-certified facial plastic surgeon and oto-laryngologist. Dr. Garcia completed her residency at Henry Ford Health in Detroit Michigan. She completed her fellowship at Boston University/The Spiegel Center under Dr. Jeffrey Spiegel. After her fellowship, she returned to Henry Ford Health and has been active in the transgender community. She has been actively growing a facial feminization practice and is passionate about her work. Dr. Garcia has also been busy performing trauma surgery, MOHS closures, and rhinoplasty. Dr. Garcia has been an invited guest lecturer locally, at the state level and nationally. She has authored numerous articles and book chapters. She is on the editorial board of nationally recognized journals. She is currently working on a Clinics book chapter on gender dysphoria.



### Hamlar, David - Lecturer

MD, DDS  
 Assistant Professor  
 Craniofacial Skull Base Center  
 Department of Otolaryngology  
 University of Minnesota  
 Minneapolis, Minnesota

My passion is craniofacial reconstruction for children born with congenital deformities such as cleft lip and palate, cranial synostosis, and midface hypoplasia, hemifacial microsomia, Treacher-Collins, and other related jaw deformities. I enjoy microtia repair, microvascular reconstruction of head and neck defects, as well as the acute management of traumatic craniofacial injuries. I also manage head and tumors such as ameloblastomas, fibrous dysplasia, cystic hygromas, juvenile angiofibromas and their reconstruction. Techniques include image-guided minimally invasive skull base surgery, distraction osteogenesis, and resorbable hardware. I am retired military having deployed numerous times in both surgical and medical command positions. Nothing has meant more to me than caring for our injured men and women in the armed services.



### Hsieh, Tsung-Yen - Lecturer

MD  
Assistant Professor  
Facial Plastic and Reconstructive Surgery  
Otolaryngology - Head & Neck Surgery  
University of Southern California  
Children's Hospital Los Angeles  
Los Angeles, California

Tsung-Yen Hsieh, MD is a double board-certified surgeon in Facial Plastic & Reconstructive Surgery and Otolaryngology, and an assistant professor at the University of Southern California and Children's Hospital Los Angeles. Dr. Hsieh's interests span both aesthetic and reconstructive surgery. He has skill sets in providing surgical care in facial trauma management, head and neck cancer reconstruction, facial reanimation for facial paralysis, repair of congenital defects, as well as surgical and nonsurgical cosmetic procedures. He completed his Otolaryngology residency at the University of California, Davis, and completed his fellowship in Facial Plastic & Reconstructive Surgery and Head & Neck Microvascular Surgery at the University of Minnesota. He has had comprehensive training in aesthetic and reconstructive surgeries of the face, head, and neck. Dr. Hsieh has authored over thirty publications with research involving emerging surgical technology (virtual surgical planning, computer aided design [CAD] / computer aided manufacturing [CAM]), facial reanimation, facial trauma management, cleft and craniofacial surgery, and surgical education. Additionally, he maintains his commitment to global health through medical mission trips and exchanges worldwide.



### King, Timothy - Lecturer

MD, PhD, MBA, MS, FAAP, FACS  
Chief of Plastic Surgery  
Edward Hines Jr. Veterans Hospital  
Hines, Illinois

Dr. Timothy W. King is a plastic surgeon and the Chief of Plastic Surgery at the Edward Hines Jr. VA Hospital. He completed his plastic surgery training at the Institute of Reconstructive Plastic Surgery at the New York University Medical Center, followed by a fellowship in pediatric plastic surgery at the Northwestern University Children's Memorial Hospital in Chicago, IL. He has a Bachelors and Masters degree in Bioengineering from Texas A&M University, a PhD in Biophysics from MD Anderson Cancer Center, where he also obtained two patents in biodegradable microspheres and an MBA from Boston University. His clinical practice concentrates on plastic and reconstructive surgery with facial trauma, lower extremity trauma, hand trauma, cancer needing reconstruction. He is a past recipient of the American Association of Plastic Surgeons Academic Scholar Award and the American College of Surgeons Louis C. Argenta Faculty Research Fellowship, two of the most prestigious foundation career development awards available to a surgeon. He is the Past-President of the Plastic Surgery Research Council (PSRC), Past-President of the American Association of Pediatric Plastic Surgeons, Past-President of the Section of Plastic Surgery for the American Academy of Pediatrics, Past-Vice-President of the International Society for Pediatric Wound Care, and the Past-Board Member of the American Society of Plastic Surgeons and the Wound Healing Society. He is the Past-Associate Editor of Plastic Surgery and Wound Healing for the Journal of Surgical Research. Currently, he is the Section Editor of the journal FACE, and Associate Editor of Craniomaxillofacial Trauma and Reconstruction. He has been selected for membership into the Society of University Surgeons, the American Association of Plastic Surgeons, Alpha Omega Alpha & the Surgical Biology Club II.



### Pearson, Gregory - Lecturer

MD  
Professor Clinical  
Program Director  
Department of Plastic and Reconstructive Surgery  
The Ohio State University  
Director, Center for Complex Craniofacial Disorders  
Nationwide Children's Hospital

Columbus, Ohio

After completing a craniofacial fellowship, Dr. Pearson has been a practicing Pediatric and Craniofacial Surgeon for 20 years. He is the Director for the Center for Complex Craniofacial Disorders at Nationwide Children's Hospital, a member of the Cleft Lip and Palate team, and is co-director of The Vascular Anomalies Center at Nationwide Children's Hospital. Dr. Pearson is the Program Director for the Ohio State University Plastic Surgery Residency and has received numerous teaching awards.



### Turner, Michael - Lecturer

DDS, MD, MSc, FACS  
Chief  
Division of Oral and Maxillofacial Surgery  
Mount Sinai Hospital  
Associate Professor  
Icahn School of Medicine at Mount Sinai  
New York, New York

Dr. Michael Turner is the Chief of Oral and Maxillofacial Surgery at The Mount Sinai Hospital and the program director of the Mount Sinai/Jacobi/Einstein Residency in Oral and Maxillofacial Surgery. He received his dental degree from the University of Maryland, followed by a preliminary certificate of Oral and Maxillofacial from the Johns Hopkins University School of Medicine. He graduated from the SUNY Stony Brook School, after which he completed residency training at Long Island Jewish Medical Center. He completed a Master of Science in clinical research and translational medicine from the New York University School of Medicine. A diplomate of the American Board of Oral and Maxillofacial Surgery, a fellow of the American College of Surgeons and an active member and fellow of the American Association of Oral and Maxillofacial Surgery, Dr. Turner is an expert in maxillofacial reconstructive surgery and orthognathic surgery and is considered an international expert on minimally invasive salivary gland surgery. He has authored and co-authored 36 peer reviewed journal articles and 20 book chapters and 1 handbook. He is on the Committee of Applicants of the American College of Surgeons, the President of the New York State Society of Oral and Maxillofacial Surgery and the Vice-Chair of the Section of Dentistry and Oral Health of the New York Academy of Medicine. He currently serves on the editorial boards of the Journal of Oral and Maxillofacial Surgery, Frontiers of Oral and Maxillofacial and Craniomaxillofacial Trauma and Reconstruction.



15:20 - 17:05 **SESSION B: SMALL GROUP DISCUSSION (Cases: NOE, Nasal, Frontal Sinus); Summary, Q and A**

<b>Group</b>	<b>Room</b>
A	Juniper A
B	Juniper B
C	Juniper C
D	Easton C
D	Easton C

17:05 - 17:05 Faculty Debrief

17:05 - 18:00 Reception Easton Foyer

**Day 2**

**Sunday, April 06, 2025 - 07:30 - 14:00 - (includes breaks, travel-time and meals)**

<b>Activity</b>	<b>Area</b>
AO Office	Regent 3
Lunch	Easton A
Lab	Easton B
Reception	Easton Foyer
Lecture	Easton A
Registration	Easton Foyer
Module A	Juniper A
Module B	Juniper B
Module C	Juniper C
Module D	Easton C

<b>Schedule</b>	<b>Title</b>	<b>Moderator</b>	<b>Faculty</b>	<b>Room</b>
07:30 - 14:00	<b>MANDIBULAR TRAUMA</b>	Bailey, J		Easton A
07:30 - 07:40	Surgical Approaches to the Mandible		Hsieh, T	Easton A
07:40 - 07:50	Mandibular Fractures: Load Sharing and Load Bearing		Cordero, J	Easton A
07:50 - 08:00	Condylar Fractures		Cillo, J	Easton A
08:00 - 08:05	Travel to Lab			
08:05 - 09:35	<b>PRACTICAL EXERCISE 2: Load Sharing Mandibular Fractures</b>	Cordero, J		Easton B
09:35 - 09:50	Coffee Break / Travel to Small Groups			
09:50 - 11:10	<b>SESSION C: SMALL GROUP DISCUSSION (Cases: Load Sharing, Tooth in the Line of Fracture, Sequencing, Condyle)</b>			

<b>Group</b>	<b>Room</b>
A	Juniper A
B	Juniper B
C	Juniper C
D	Easton C
D	Easton C

11:10 - 11:15 Travel to Lab

11:15 - 12:15 **PRACTICAL EXERCISE 3: Fractures of the Complicated Mandible** Bailey, J Easton B

12:15 - 12:25 Pick-up Boxed Lunches / Travel to Small Group Discussions

12:25 - 14:00 **SESSION D: SMALL GROUP DISCUSSION (Cases: Load Bearing): Summary, Q and A**

<b>Group</b>	<b>Room</b>
A	Juniper A
B	Juniper B
C	Juniper C
D	Easton C
D	Easton C

---

## AO NA Disclaimer Information

### Faculty Disclosure:

It is the policy of AO North America to abide by the Accreditation Council for Continuing Medical Education Standards for Commercial Support. Standard 2: "Disclosures Relevant to Potential Commercial Bias and Relevant Financial Relationships of Those with Control over CME Content," requires all planners, including course directors, chairs, and faculty, involved in the development of CME content to disclose their relevant financial relationships prior to participating in the activity. Relevant financial relationships will be disclosed to the activity audience. The intent of the disclosure is not to prevent a faculty with a relevant financial or other relationship from teaching, but to provide participants with information that might be of importance to their evaluation of content. All potential conflicts of interest have been resolved prior to the commencement of this activity.

### Off-Label / Experimental Discussions:

Some medical devices used for teaching purposes and/or discussed in AO North America's educational activities may have been cleared by the FDA for specific uses only or may not yet be approved for any purpose. Faculty may discuss off-label, investigational, or experimental uses of products/devices in CME certified educational activities. Faculty have been advised that all recommendations involving clinical medicine in this CME activity are based on evidence that is accepted within the profession of medicine as adequate justification for their indications and contraindications in the care of patients.

All scientific research referred to, reported or used in this CME activity in support or justification of a patient care recommendation conforms to the generally accepted standards of experimental design, data collection and analysis.

### Disclaimer:

AONA does not endorse nor promote the use of any product/device of commercial entities. Equipment used in this course is for teaching purposes only with the intent to enhance the learning experience.

### USE THE BELOW TEXT FOR DIDACTIC COURSES ONLY!

The opinions or views expressed in this live continuing medical education activity are those of the faculty and do not necessarily reflect the opinions or recommendations of AO North America or any commercial supporter. The certificate provided pertains only to the participants' completion of the course.

### Conflict of Interest Resolution Statement:

When individuals in a position to control or influence the development of the content have reported financial relationships with one or more commercial interests, AO North America utilizes a process to identify and resolve potential conflicts to ensure that the content presented is free of commercial bias.

### Liability Statement:

AO North America faculty and staff assume no personal liability for the techniques or the use of any equipment and accessories used for teaching purposes in the laboratory. The certificate provided pertains only to the participants' completion of the course and does not, in any way, attest to the proficiency of the participants' clinical experience.

### Laboratory Waiver:

To participate in this surgical skills course, you will be required to sign a waiver of liability prior to the course. In order to participate, AONA's policy mandates that every individual must wear appropriate protective garments provided by AO NA during the lab sessions. Participants who do not sign the waiver and wear protective garments will not be allowed to participate in the laboratory sessions.

### Human Anatomic Specimens:

This course will involve exposure to and contact with human anatomic specimens. These specimens are being utilized for purposes of teaching and learning and are to be treated with the utmost respect. Participants should be familiar with and understand the potential risks involved and will be required to observe all customary safety procedures.

## Acknowledgment

### In-Kind Support

AO North America gratefully acknowledges in-kind support for equipment and technical staff from J&JMedTech.

### Educational Grant

AO North America gratefully acknowledges funding for its education activities from the AO Foundation. The AO Foundation receives funding for education from Synthes GmbH.