



## AO CMF NA Course—Management of Facial Trauma



November 15, 2025 - November 16, 2025  
La Jolla, California, USA

This course provides learners with the fundamental knowledge and principles for the treatment of craniomaxillofacial fractures and their complications. It covers diagnostic and treatment principles for midface and mandibular fractures, as well as the prevention and treatment of complications.

### 1. Online Preparations—4 weeks prior to the face-to-face event

During these 4 weeks, it is **recommended** participants complete a self-assessment and conduct online self-study, including recommended reading material, viewing videos and completion of surgical simulation modules. Participants will receive a link to the learning materials from their event organizer.

### 2. Face-to-face event—2 days

The face-to-face event is delivered through a combination of short lectures, small group discussions, and practical exercises. This combination enables participants to hear, discuss, and apply the concepts of facial trauma management.

### 3. Online Follow-up

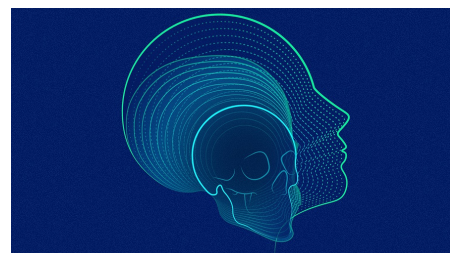
During the week after the course, participants will complete an online evaluation and post-course assessment.

### Goal of the Course

The goal of this AO CMF NA course is to address the core concepts necessary to manage acute facial trauma.

### Target Audience

This course is designed for surgeons in training in the fields of Oral and Maxillofacial Surgery, Otolaryngology, Plastics and Reconstruction, Ophthalmology and Oculoplastics. Some practicing surgeons may also find this course beneficial.



## Event Summary

### Tuition:

Level Name: Participant - CMF  
Pricing Tier: Resident  
Tuition: \$325.00

Level Name: Participant - CMF  
Pricing Tier: Attending  
Tuition: \$450.00

### Course Prerequisite(s):

No Prerequisites

### Venue:

Hyatt Regency La Jolla  
3777 La Jolla Village Drive  
San Diego, CA, USA  
Phone Number: 858-552-1234  
lajolla.hyatt.com

### Language(s):

English

### Directly Provided by:



### Professional Level Prerequisite(s):

No Prerequisites

## CME

### Continuing Education Credit: 13.25



- AO North America is accredited by the Accreditation Council for Continuing Medical Education to provide continuing medical education for physicians.

Below Wording CMF Only- Continuing Education Dental Credit Statement..

As an Accreditation Council for Continuing Medical Education (ACCME) accredited provider, AO North America meets the definition of a constituent or component organization of the AMA and thereby meets most state dental board requirements of an approved sponsor of continuing education. This course is focused on clinical issues in oral-maxillofacial surgery that are relevant to the treatment and care of dental patients. Most states accept AMA constituents as approved sponsors for continuing dental education credit. If you have questions, your state dental board can confirm eligibility of this course.

- **Designation Statement** - AO North America designates this live educational activity for a maximum of 13.25 **AMA PRA Category 1 Credits™**. Physicians should claim only the credit commensurate with the extent of their participation in the activity.

The Continuing Medical Education (CME) mission of AO North America (AONA®) is to provide comprehensive multidisciplinary needs based education to surgeons, fellows, and residents in the specialties of orthopedic, hand, craniomaxillofacial, spine, neurosurgery, and veterinary surgery in the areas of trauma (i.e.), operative reduction and fixation), degenerative disorders, deformities, tumors, and reconstruction.

Expected results of AONA's CME activities for surgeons, fellows, and residents are to:

- Increase their knowledge base and surgical skill level
- Improve competence by applying advances of knowledge in patient care in the areas of trauma, degenerative disorders, deformities, tumors, and reconstructive surgical techniques
- Address practice performance gaps by improving management of aspects of traumatic injuries and musculoskeletal disorders (i.e., pre-operative planning to post-operative care)

## Learning Objectives

Upon completion, participants should be able to:

- Diagnose facial injury through history, physical examination, and diagnostic investigations
- Formulate a treatment plan (operative and non-operative)
- Perform the specific treatment for facial trauma
- Modify the treatment plan when necessary
- Manage patient follow-up and rehabilitation
- Identify and manage complications

## Faculty



### Latham, Kerry - Chairperson

MD, FACS  
Plastic Surgeons of Alaska  
Associate Professor of Surgery and Pediatrics - USUHS  
Anchorage, Alaska

Dr. Kerry Latham is a Craniofacial Plastic surgeon in Anchorage Alaska

---



### Liddell, Aaron - Co-Chairperson

MD, DMD, FACS  
President Elect, Chief of Staff, Swedish Medical Center  
Section Chief, Oral and Maxillofacial Surgery, Swedish Medical Center  
Private Practice, Colorado Oral and Maxillofacial Surgery  
400 S. Colorado BLVD, STE 450  
Denver, Colorado

Dr. Liddell practices oral and maxillofacial surgery in Denver, Colorado. He currently serves as the President Elect of the medical staff at Swedish Medical Center, where he also serves as Section Chief of Oral and Maxillofacial Surgery. He is the medical director of a multi-specialty trauma group, covering six trauma centers in the Metro-Denver region and is the co-director of the TESS facial trauma fellowship. His clinical interests include facial trauma reconstruction, correction of dentofacial deformities/orthognathic surgery, and temporomandibular joint reconstruction.

---



### Luu, Quang - Co-Chairperson

MD  
Director, Head and Neck Surgical Oncology  
Leonard Cancer Institute  
Head and Neck Associates of Orange County  
Mission Viejo, California



### Herford, Alan - Director

DDS, MD, FACS  
Professor and Chair  
Department of Oral & Maxillofacial Surgery  
Loma Linda University School of Dentistry  
Loma Linda, California

Dr. Herford is currently Professor and Chair of the Department of Oral and Maxillofacial Surgery at Loma Linda University. Dr. Herford completed an Oral and Maxillofacial Surgery residency training program at Parkland Hospital in Dallas Texas. He serves on numerous committees and Boards. He is a Fellow of the American Association of Oral and Maxillofacial Surgeons as well as the American College of Surgeons. He recently served on the Board of Directors for the American Board of Oral and Maxillofacial Surgery (ABOMS). He is a past president of the ABOMS, CALAOMS, and the North American Craniomaxillofacial Trauma Education Board (NACMF). Dr Herford is currently serving on the Board of Directors for the AONA. Dr. Herford has a strong interest in utilizing technology in treating trauma and orthognathic patients.

---

## Agenda

### Day 1

**Saturday, November 15, 2025 - 08:00 - 17:05 - (includes breaks, travel-time and meals)**

Schedule	Title	Moderator	Faculty	Room
08:00 - 08:10	COURSE OPENING			
08:00 - 08:10	Welcome and Introduction			
08:10 - 11:50	MID & UPPER FACIAL TRAUMA			
08:10 - 08:20	Surgical Approaches to the Midface			
08:20 - 08:30	Reestablishing Pre-traumatic Occlusion			
08:30 - 08:40	Maxillary Fractures			
08:40 - 08:50	Zygomatic Fractures			
08:50 - 09:00	Orbital Wall Fractures			
09:00 - 09:15	Coffee Break / Travel to Small Group Discussions			
09:15 - 11:15	SESSION A: SMALL GROUP DISCUSSION (Cases: Zygomatic, Orbit, Zygoma and Orbit, Le Fort Fractures); Summary, Q and A			
11:15 - 11:20	Travel to Lecture Hall			
11:20 - 11:30	Nasoorbitoethmoidal (NOE) Fractures			
11:30 - 11:40	Frontal Sinus Fractures			
11:40 - 11:50	Panfacial Fractures - Sequencing of Repair			
11:50 - 12:50	Lunch			
12:50 - 17:05	MID & UPPER FACIAL TRAUMA (continued)			
12:50 - 14:20	PRACTICAL EXERCISE 1: Complex Midface Fractures			
14:20 - 14:25	Travel to Lecture Hall			
14:25 - 14:35	Pediatric Facial Injuries			
14:35 - 14:55	Keynote Lecture - Lessons Learned			
14:55 - 15:05	AO CMF - What is in it for you? (Membership Benefits, Offerings)			
15:05 - 15:20	Coffee Break / Travel to Small Group Discussions			
15:20 - 17:05	SESSION B: SMALL GROUP DISCUSSION (Cases: NOE, Nasal, Frontal Sinus); Summary, Q and A			
17:05 - 17:05	Faculty Debrief			
17:05 - 18:00	Reception			

### Day 2

**Sunday, November 16, 2025 - 07:30 - 14:00 - (includes breaks, travel-time and meals)**

Schedule	Title	Moderator	Faculty	Room
07:30 - 14:00	MANDIBULAR TRAUMA			
07:30 - 07:40	Surgical Approaches to the Mandible			
07:40 - 07:50	Mandibular Fractures: Load Sharing and Load Bearing			
07:50 - 08:00	Condylar Fractures			
08:00 - 08:05	Travel to Lab			
08:05 - 09:35	PRACTICAL EXERCISE 2: Load Sharing Mandibular Fractures			
09:35 - 09:50	Coffee Break / Travel to Small Groups			

09:50 - 11:10	SESSION C: SMALL GROUP DISCUSSION (Cases: Load Sharing, Tooth in the Line of Fracture, Sequencing, Condyle)
11:10 - 11:15	Travel to Lab
11:15 - 12:15	PRACTICAL EXERCISE 3: Fractures of the Complicated Mandible
12:15 - 12:25	Pick-up Boxed Lunches / Travel to Small Group Discussions
12:25 - 14:00	SESSION D: SMALL GROUP DISCUSSION (Cases: Load Bearing): Summary, Q and A

## AO NA Disclaimer Information

### Faculty Disclosure:

It is the policy of AO North America to abide by the Accreditation Council for Continuing Medical Education Standards for Commercial Support. Standard 2: "Disclosures Relevant to Potential Commercial Bias and Relevant Financial Relationships of Those with Control over CME Content," requires all planners, including course directors, chairs, and faculty, involved in the development of CME content to disclose their relevant financial relationships prior to participating in the activity. Relevant financial relationships will be disclosed to the activity audience. The intent of the disclosure is not to prevent a faculty with a relevant financial or other relationship from teaching, but to provide participants with information that might be of importance to their evaluation of content. All potential conflicts of interest have been resolved prior to the commencement of this activity.

### Off-Label / Experimental Discussions:

Some medical devices used for teaching purposes and/or discussed in AO North America's educational activities may have been cleared by the FDA for specific uses only or may not yet be approved for any purpose. Faculty may discuss off-label, investigational, or experimental uses of products/devices in CME certified educational activities. Faculty have been advised that all recommendations involving clinical medicine in this CME activity are based on evidence that is accepted within the profession of medicine as adequate justification for their indications and contraindications in the care of patients.

All scientific research referred to, reported or used in this CME activity in support or justification of a patient care recommendation conforms to the generally accepted standards of experimental design, data collection and analysis.

### Disclaimer:

AONA does not endorse nor promote the use of any product/device of commercial entities. Equipment used in this course is for teaching purposes only with the intent to enhance the learning experience.

### USE THE BELOW TEXT FOR DIDACTIC COURSES ONLY!

The opinions or views expressed in this live continuing medical education activity are those of the faculty and do not necessarily reflect the opinions or recommendations of AO North America or any commercial supporter. The certificate provided pertains only to the participants' completion of the course.

### Conflict of Interest Resolution Statement:

When individuals in a position to control or influence the development of the content have reported financial relationships with one or more commercial interests, AO North America utilizes a process to identify and resolve potential conflicts to ensure that the content presented is free of commercial bias.

### Liability Statement:

AO North America faculty and staff assume no personal liability for the techniques or the use of any equipment and accessories used for teaching purposes in the laboratory. The certificate provided pertains only to the participants' completion of the course and does not, in any way, attest to the proficiency of the participants' clinical experience.

### Laboratory Waiver:

To participate in this surgical skills course, you will be required to sign a waiver of liability prior to the course. In order to participate, AONA's policy mandates that every individual must wear appropriate protective garments provided by AO NA during the lab sessions. Participants who do not sign the waiver and wear protective garments will not be allowed to participate in the laboratory sessions.

### Human Anatomic Specimens:

This course will involve exposure to and contact with human anatomic specimens. These specimens are being utilized for purposes of teaching and learning and are to be treated with the utmost respect. Participants should be familiar with and understand the potential risks involved and will be required to observe all customary safety procedures.

### Animal Anatomic Specimens:

This course will involve exposure to and contact with animal anatomic specimens. These specimens are being utilized for purposes of teaching and learning and are to be treated with the utmost respect. Participants should be familiar with and understand the potential risks involved and will be required to observe all customary safety procedures.

## Acknowledgment

### In-Kind Support

AO North America gratefully acknowledges in-kind support for equipment and technical staff from J&JMedTech.

### Educational Grant

AO North America gratefully acknowledges funding for its education activities from the AO Foundation. The AO Foundation receives funding for education from Synthes GmbH.